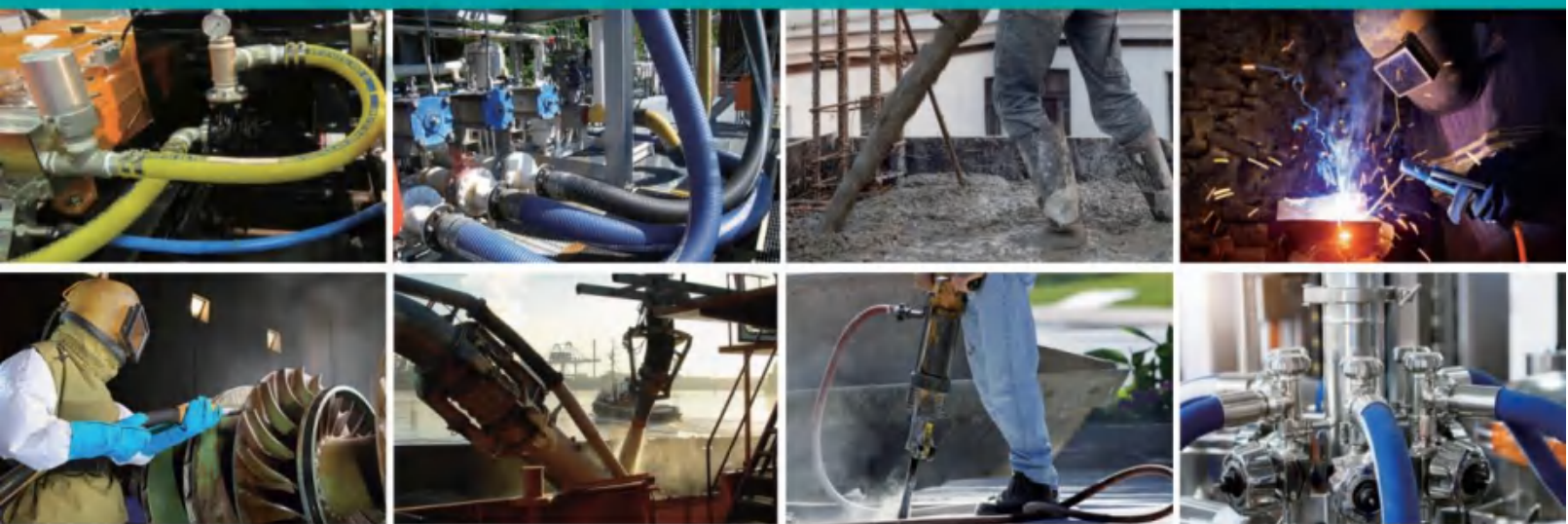


INDUSTRIAL HOSE



SOMAXFLEX
ALWAYS A RELIABLE PARTNER

Who Are We?

Chinese Leader

For 30 years, we have a passion for flexibility everywhere in SOMAX, in our products, in the production processes and also in our people. SOMAX is a Chinese company registered in HongKong and acquired the American "JYM" brand. We produce rigid and soft mandrel rubber hoses. Hoses are suitable to convey any type of fluids, powders, granules, gases and liquids. Flexible hoses can meet the needs of different industrial sectors: Agriculture, Construction, Automotive, Dredging, Metallurgy, Mining, Oil & Gas, Shipyard, Tank Truck and Welding. Hoses can reach continuous lengths up to 60 meters and can be supplied with any type of fittings at the ends.

Each SOMAX rubber hose is tailor-made for the customer. It is a perfect mix of technology and handmade experiences of men and women who make them. We are an ISO9001:2015 certified manufacturer and we have extremely skilled and experienced engineers who are focused on research and development project.

Modern Production

Each year, we produce more than twice the circumference of the Earth from our 150 production lines. Added to this impressive production capacity, is the expertise that demonstrates an advanced technology.

Best Service. Best Value. Best Advice

What Can We Do?

- Industrial Trade customer base that requires the expertise of supplier in the Industrial rubber hose market.
- Trained knowledgeable staff
- Great team culture dedicated to genuine customer service
- **Best Service. Best Value. Best Advice.**

This, our latest trade catalogue, has an increased range of trade related information, including our exclusive 'Hose Management Program', easy reference conversion and chemical compatibility charts and more products exclusive to SOMAX.

Since our last catalogue was produced, SOMAX has gone through a number of major changes

It's also aided in establishing a larger and more specialized product range, which is highlighted in this new catalogue. Greater choice and value have never been this easy to obtain from one retailer.

We would like to take the opportunity to thank you for your past support and along with the team at SOMAX look forward to being of service to you now and long into the future.



Rubber Air Hose



Rubber Water Hose



Rubber oil Hose



Chemical Hose



Food Grade Hose



Multipurpose Hose



Welding Hose



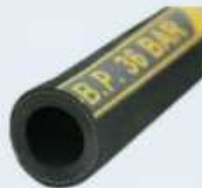
LPG Gas Hose



Hot Water Hose



Automotive Hose



Material Handling Hose



Steam Hose

QUALIFICATION HONOR

We help you grow your rubber hose market.

From start to finish, we support our customers as a competent, reliable and experienced partner, actively contributing the know-how of an industrial company that has been successful in the market for over 20 years.



01-12

Rubber Air Hose

13-19

Rubber Water Hose

20-23

Rubber Hot Water Hose

24-31

Oil & Petroleum Hose

32-34

Steam Hose

35-37

Chemical Hose

38-40

Food Grade Hose

41-42

Multipurpose Hose

43-47

Material Handling Hose



48-51

Welding Hose

52-54

LPG Gas Hose

55-59

Automotive Hose

60-62

Spray Painting Hose

63-64

Special Hose

65-70

Silicone Hose



RUBBER AIR HOSE

ALWAYS A RELIABLE PARTNER



RUBBER AIR HOSE

Air/Water Rubber Hose-Extruded Smooth



Tube:

Black smooth oil-mist resistant synthetic rubber

Reinforcement:

High tensile synthetic yarn braided.

Cover:

Black or colour smooth synthetic rubber, weather and abrasion resistant.

Temp Range:

From -30°C to +80°C .+80°C is the instantaneous temperature.

Application:

For a variety of general purposes in industries, construction sites and mines.

Code	I.D.		O.D.	W.P.		B.P.		Weight	Max.Length
	mm	inch	mm	bar	psi	bar	psi	kg/m	m/roll
1001000	5	3/16"	12	20	300	60	900	0.13	100
1001001	6	1/4"	13	20	300	60	900	0.15	100
1001002	8	5/16"	15	20	300	60	900	0.23	100
1001003	10	3/8"	17	20	300	60	900	0.26	100
1001004	12.7	1/2"	21	20	300	60	900	0.36	100
1001005	16	5/8"	26	20	300	60	900	0.53	50
1001006	19	3/4"	30	20	300	60	900	0.64	50
1001007	22	7/8"	32	20	300	60	900	0.75	50
1001008	25	1"	35	20	300	60	900	0.85	50

Jackhammer Hose Assembly 300PSI (U.S.A Market)



Tube:

Black seamless medium oil resistant synthetic rubber.

Reinforcement:

High tensile synthetic yarn.

Cover:

EPDM cover,smooth yellow or red and abrasion resistant

Temp Range:

From -30°C to +80°C .+80°C is the instantaneous temperature.

Standard Lengths: 50ft/100ft

Application:

A long Length air hose for construction and general industry.

Code	Mode	PLY	I.D.	O.D.	Tolerance	WP	BP	Weight	Maximum loading		
	in		mm	mm	mm	psi	psi		each pallet	20'	40'
1002001	3/4"x50FT	1B	19	29	+/-0.8	250	750	11	45	900	1800
1002002	1"x50FT	1B	25.4	36	+/-1.0	200	600	14.5	28-32	600	1200
1002003	1"x50FT	2B	25.4	37	+/-1.0	300	900	15.5	28-32	600	1200

Steel Wire Reinforced Air Hose 40Bar



Tube:

Black, smooth, NBR rubber.

Reinforcement:

High tensile steel wire.

Cover:

Yellow, smooth, (wrapped finish) long lasting EPDM rubber, weathering and ozone resistant.

Temperature:

From -30°C to +70°C .

Application:

High pressure steel wire reinforced compressed air hose;

Code	I.D.	O.D.	W.P.	B.P.	Max.Length
	mm	mm	bar	bar	m/roll
1003001	13	23	40	160	100
1003002	19	29	40	160	50
1003003	25	36.5	40	160	50
1003004	32	47	40	160	40
1003005	38	53.6	40	160	40
1003006	51	65.6	40	160	40
1003007	64	78	40	160	40
1003008	76	90.5	40	160	40

Textile Reinforced Air Hose-Wrapped Surface



Tube:

Black, smooth, SBR rubber, oil mist resistant.

Reinforcement:

High strength synthetic cord.

Cover:

Black, smooth, (wrapped finish) long lasting EPDM rubber, weathering and ozone resistant.

Temperature:

From -30°C to +70°C

Application:

Soft wall hose for compressed air with light traces of oil mist, normally used for heavy duty applications in road construction sites, quarries and mines.

Code	I.D.	O.D.	W.P.	B.P.	Max.Length
	mm	mm	Bar	Bar	m/roll
1004000	10	16	20	60	100
1004001	12.7	20	20	60	100
1004002	16	23.5	20	60	100
1004003	19	27	20	60	50
1004004	25	33.5	20	60	50
1004005	32	42.8	20	60	61
1004006	38	48.8	20	60	61
1004007	51	63	20	60	61
1004008	64	76	20	60	61
1004009	76	90	20	60	61
1004010	102	116	20	60	61



RUBBER AIR HOSE

Smooth Yellow Air Hose-Extruded Smooth



Tube:

Black, seamless synthetic rubber compound.

Reinforcement:

High strength synthetic yarn.

Cover:

Yellow EPDM, abrasion, ozone and weather resistant.

Temperature:

From -25 °C to +80 °C ,+80°C is the instantaneous temperature.

Application:

Designed for compressed air, to convey water and non-aggressive fluids in various industrial and agricultural applications.

Code	I.D.		O.D.	W.P.		B.P.		Weight	Max.Length
	mm	inch	mm	bar	psi	bar	psi	kg/m	m/roll
1005000	5	3/16"	12	20	300	60	900	0.13	100
1005001	6	1/4"	13	20	300	60	900	0.15	100
1005002	8	5/16"	15	20	300	60	900	0.23	100
1005003	10	3/8"	17	20	300	60	900	0.26	100
1005004	12.7	1/2"	21	20	300	60	900	0.36	100
1005005	16	5/8"	26	20	300	60	900	0.53	50
1005006	19	3/4"	30	20	300	60	900	0.64	50
1005007	22	7/8"	32	20	300	60	900	0.75	50
1005008	25	1"	35	20	300	60	900	0.85	50

Red Rubber Air Hose



Tube:

Black, smooth, SBR rubber, oil mist resistant.

Reinforcement:

High strength synthetic cord.

Cover:

Red, (wrapped finish) long lasting EPDM rubber, weathering and ozone resistant.

Temperature:

From -30°C to +70°C

Application:

Softwall hose for compressed air with light traces of oil mist, normally used for heavy duty applications in road construction sites, quarries and mines.

Code	I.D.	O.D.	W.P.	B.P.	Max.Length
	mm	mm	bar	bar	m
1006000	10	16	20	60	61
1006001	12.7	20	20	60	61
1006002	16	23.5	20	60	61
1006003	19	27	20	60	61
1006004	25	33.5	20	60	61
1006005	32	42.8	20	60	61
1006006	38	48.8	20	60	61
1006007	51	63	20	60	61
1006008	63	76	20	60	61
1006009	76	90	20	60	61
1006010	102	120	20	60	61

General Purpose Air/Water Hose 200 PSI-Red



Tube:

Black, limited oil resistant synthetic rubber

Reinforcement:

High tensile synthetic yarn

Cover:

Smooth red, abrasion, weather and ozone resistant rubber

Temperature:

From -29°C to +80°C

Application:

Air, water, agricultural spray solutions, and other diluted chemicals. Good resistance to heat, abrasion, and weathering.

Code	I.D.	O.D.	W.P.	B.P.	Max.Length
	Inch	Inch	psi	psi	Ft/Roll
1007000	1/4"	0.5	200	600	300
1007001	5/16"	0.58	200	600	300
1007002	3/8"	0.67	200	600	300
1007003	1/2"	0.81	200	600	300
1007004	5/8"	0.97	200	600	300
1007005	3/4"	1.12	200	600	300
1007006	1"	1.45	200	600	300

General Purpose Air/Water Hose 200PSI-Black



Tube:

Black, limited oil resistant synthetic rubber

Reinforcement:

High tensile synthetic yarn

Cover:

Smooth black, abrasion, weather and ozone resistant rubber

Temperature:

From -29°C to +80°C

Application:

For a wide range of heavy duty industrial, construction, and agricultural water discharge applications in which a heavy duty rubber water hose is needed.

Code	I.D.	O.D.	W.P.	B.P.	Max.Length
	Inch	Inch	psi	psi	Ft/Roll
1008000	1/4"	0.5	200	600	300
1008001	5/16"	0.58	200	600	300
1008002	3/8"	0.67	200	600	300
1008003	1/2"	0.81	200	600	300
1008004	5/8"	0.97	200	600	300
1008005	3/4"	1.12	200	600	300
1008006	1"	1.45	200	600	300



RUBBER AIR HOSE

General Purpose Air Hose Assemblies 200 PSI-Red



Tube:

Black, limited oil resistant synthetic rubber

Reinforcement:

High tensile synthetic yarn

Cover:

Smooth red, abrasion, weather and ozone resistant rubber

Temperature:

From -29°C to +80°C

Application:

Air, water, agricultural spray solutions, and other diluted chemicals. Good resistance to heat, abrasion, and weathering.

Code	Hose Size	Fitting		W.P. psi	Length ft	Attaching Method
	inch	a	b			
1009000	1/4"	1/4 NPT	1/4 NPT	200	25	CRIMP
1009001	1/4"	1/4 NPT	1/4 NPT	200	50	CRIMP
1009002	3/8"	1/4 NPT	1/4 NPT	200	25	CRIMP
1009003	3/8"	1/4 NPT	1/4 NPT	200	50	CRIMP
1009004	3/8"	1/4 NPT	1/4 NPT	200	100	CRIMP
1009005	3/8"	3/8 NPT	3/8 NPT	200	50	CRIMP
1009006	3/8"	3/8 NPT	3/8 NPT	200	100	CRIMP
1009007	1/2"	1/2 NPT	1/2 NPT	200	50	CRIMP

General Purpose Air Hose Assemblies 200 PSI-Black



Tube:

Black, limited oil resistant synthetic rubber

Reinforcement:

High tensile synthetic yarn

Cover:

Smooth black, abrasion, weather and ozone resistant rubber

Temperature:

From -29°C to +80°C

Application:

For a wide range of heavy duty industrial, construction, and agricultural water discharge applications in which a heavy duty rubber water hose is needed.

Code	Hose Size	Fitting		W.P. psi	Length ft	Attaching Method
	inch	a	b			
1010000	1/2"	M-GHT	F-GHT	200	25	CRIMP
1010001	1/2"	M-GHT	F-GHT	200	50	CRIMP
1010002	1/2"	M-GHT	F-GHT	200	75	CRIMP
1010003	1/2"	M-GHT	F-GHT	200	100	CRIMP

General Purpose Air Hose 300 PSI-Red



Tube:

Black, limited oil resistant synthetic rubber

Reinforcement:

High tensile synthetic yarn

Cover:

Smooth red, abrasion, weather and ozone resistant rubber

Temperature:

From 29°C to +80°C

Application:

Air, water, agricultural spray solutions, and other diluted chemicals. Good resistance to heat, abrasion, and weathering.

Code	I.D.	O.D.	W.P.	B.P.	Max.Length
	Inch	Inch	psi	psi	Ft/Roll
1011000	1/4"	0.53	300	900	300
1011001	3/8"	0.7	300	900	300
1011002	1/2"	0.84	300	900	300
1011003	5/8"	0.98	300	900	300
1011004	3/4"	1.15	300	900	300
1011005	1"	1.47	300	900	300

General Purpose Air Hose Assemblies 300 PSI-Red



Tube:

Black, limited oil resistant synthetic rubber

Reinforcement:

High tensile synthetic yarn

Cover:

Smooth red, abrasion, weather and ozone resistant rubber

Temperature:

From -29°C to +80°C

Application:

Air, water, agricultural spray solutions, and other diluted chemicals. Good resistance to heat, abrasion, and weathering.

Code	Hose Size	Fitting		W.P.	Length	Attaching Method
	inch	a	b	psi	ft	
1012000	1/4"	1/4 NPT	1/4 NPT	300	25	CRIMP
1012001	1/4"	1/4 NPT	1/4 NPT	300	50	CRIMP
1012002	3/8"	1/4 NPT	1/4 NPT	300	25	CRIMP
1012003	3/8"	1/4 NPT	1/4 NPT	300	50	CRIMP
1012004	3/8"	1/4 NPT	1/4 NPT	300	100	CRIMP
1012005	3/8"	3/8 NPT	3/8 NPT	300	25	CRIMP
1012006	3/8"	3/8 NPT	3/8 NPT	300	50	CRIMP
1012007	3/8"	3/8 NPT	3/8 NPT	300	100	CRIMP



RUBBER AIR HOSE

Multi-Purpose Rubber Hose 300 PSI-Red



Tube:

Black nitrile, RMA class A (high oil resistance)

Reinforcement:

High tensile synthetic yarn

Cover:

Red NBR blend, RMA class B

Temperature:

From -29°C to +80°C

Application:

A premium quality, multi-purpose hose for industrial air service, compressor lines, pneumatic tools, low-pressure spray and many other applications where oil resistance is needed. Non conductive, minimum electrical resistance greater than (1) megohm per inch of hose Length at 1000 V DC.

Code	I.D.	O.D.	W.P.	B.P.	Max.Length
	inch	inch	psi	psi	Ft/Roll
1013000	1/4"	0.54	300	900	300
1013001	5/16"	0.64	300	900	300
1013002	3/8"	0.69	300	900	300
1013003	1/2"	0.86	300	900	300
1013004	5/8"	1.02	300	900	300
1013005	3/4"	1.19	300	900	300
1013006	1"	1.50	300	900	300
1013007	1-1/4"	1.80	300	900	200
1013008	1-1/2"	2.09	300	900	200
1013009	2"	2.64	300	900	200

Multi-Purpose Rubber Hose Assemblies 300 PSI-Red



Tube: Black nitrile, RMA class A (high oil resistance)

Reinforcement: High tensile synthetic yarn

Cover: Red NBR blend, RMA class B

Temperature: From 29°C to +80°C

Application:

A premium quality, multi-purpose hose for industrial air service, compressor lines, pneumatic tools, low-pressure spray and many other applications where oil resistance is needed. Non conductive, minimum electrical resistance greater than (1) megohm per inch of hose Length at 1000 V DC.

Code	Hose Size	Fitting		W.P.	Length	Attaching Method
	inch	a	b	psi	ft	
1014000	1/4"	1/4 NPT	1/4 NPT	300	25	CRIMP
1014001	1/4"	1/4 NPT	1/4 NPT	300	50	CRIMP
1014002	3/8"	1/4 NPT	1/4 NPT	300	25	CRIMP
1014003	3/8"	1/4 NPT	1/4 NPT	300	50	CRIMP
1014004	3/8"	1/4 NPT	1/4 NPT	300	100	CRIMP
1014005	3/8"	3/8 NPT	3/8 NPT	300	25	CRIMP
1014006	3/8"	3/8 NPT	3/8 NPT	300	50	CRIMP
1014007	3/8"	3/8 NPT	3/8 NPT	300	100	CRIMP

Hot Air Blower Discharge Hose 10 Bar



Tube:

Black EPDM – heat-resistant.

Reinforcement:

High tensile synthetic textile

Cover:

Abrasion, ozone and weather resistant EPDM rubber

Temperature:

From -40°C to +180°C

Application:

Transfer of hot and dry air from compressor to tank truck.

Code	I.D.		O.D.	W.P.		B.P.		Weight	Length
	mm	inch	mm	bar	psi	bar	psi	g/m	m/roll
1015000	25.4	1"	39	10	150	30	450	825	40-50-61
1015001	32	1 1/4"	46	10	150	30	450	995	40-50-61
1015002	38	1 1/2"	54	10	150	30	450	1405	40-50-61
1015003	50.8	2"	68	10	150	30	450	1955	40-50-61
1015004	63.5	2 1/2"	81	10	150	30	450	2390	40-50-61
1015005	76.2	3"	94	10	150	30	450	2810	40-50-61
1015006	101.6	4"	120	10	150	30	450	3851	40-50-61

Hot Air Blower S&D Hose



Tube:

Black EPDM – heat-resistant.

Reinforcement:

High tensile synthetic textile and steel wire helix

Cover:

Abrasion ozone and weather resistant EPDM rubber

Temperature:

From -40°C to +180°C

Application:

Transfer of hot and dry air from compressor to tank truck.

Code	I.D.		O.D.	W.P.		B.P.		Weight	Length
	mm	inch	mm	bar	psi	bar	psi	g/m	m/roll
1016000	25.4	1"	39	10	150	30	450	825	40-50-61
1016001	32	1 1/4"	42	10	150	30	450	995	40-50-61
1016002	38	1 1/2"	50	10	150	30	450	1405	40-50-61
1016003	50.8	2"	64	10	150	30	450	1955	40-50-61
1016004	63.5	2 1/2"	78	10	150	30	450	2390	40-50-61
1016005	76.2	3"	91	10	150	30	450	2810	40-50-61
1016006	101.6	4"	116	10	150	30	450	3851	40-50-61



RUBBER AIR HOSE

Air Compressor Hose Assembly 20Bar (U.K Market)



Description:

A highly durable yellow cover compressed air hose, fitted with interlocking safety clamps and quick release couplings. It remains flexible even in cold conditions. Available in standard 15ft or 50ft Lengths but can be supplied in longer Lengths.

Fittings:

As standard, each compressor hose assembly is fitted with European type malleable iron quick release couplings secured using interlocking safety claw type clamps. We can also offer with US QAY type couplings and also swaged on. Lengths: Available in standard 15mt Lengths, longer Lengths are possible.

Other:

For compressed air assemblies we always recommend using Type A whip-check safety cables.

Code	I.D.	O.D.	W.P.		Length	Weight	Fittings	Clamps
	mm	mm	bar	psi	ft	kg/each		
1017000	19	30	20	300	15	10.5	European Type Q1	Claw Clamps
1017001	19	30	20	300	15	10.5	US Type QAY1	Claw Clamps
1017002	19	30	20	300	15	10.5	European Type Q1	Swaged
1017003	19	30	20	300	15	10.5	US Type QAY1	Swaged
1017004	25	35	20	300	15	14	European Type Q1	Claw Clamps
1017005	25	35	20	300	15	14	US Type QAY1	Claw Clamps
1017006	25	35	20	300	15	14	European Type Q1	Swaged
1017007	25	35	20	300	15	14	US Type QAY1	Swaged

NBR Layflat Air Compressor Hose 20Bar



Reinforcement:

Polyester woven jacket

Inner and cover:

1. Nitril synthetic rubber 2. TPR(thermoplastic rubber)

Application:

Layflat compressed air hose is designed for air compressors, pneumatic tools, Rock drill, automated air line, air supply, construction equipment and so on.

Code	I.D.		W.P.		B.P.		Length
	mm	inch	bar	psi	bar	psi	Ft/Roll
1018000	19.1	3/4"	27	400	81	1200	200
1018001	25.4	1 "	27	400	81	1200	200
1018002	38.1	1-1/2"	20	300	60	900	200
1018003	50.8	2"	14	200	42	600	200
1018004	76.2	3"	14	200	42	600	200
1018005	101.6	4"	14	200	42	600	200
1018006	152.4	6"	14	200	42	600	200

Hot Air Hose



Tube:

Smooth black ,EPDM rubber

Reinforcement:

High strength synthetic yarn

Cover:

Black smooth finish,EPDM rubber, weathering and ozone resistant

Working Temperature:

From -30°C to +100°C

Application:

Heavy duty hot air hose is specifically designed to convey air for high temperature applications.

Code	I.D.		O.D.	W.P.		B.P.		Length
	mm	inch	mm	bar	psi	bar	psi	m/roll
40093037	6	1/4 "	13	20	300	60	900	100
40093038	8	5/16 "	15	20	300	60	900	100
40093039	10	3/8 "	17	20	300	60	900	100
40093040	13	1/2 "	21	20	300	60	900	100
40093041	16	5/8 "	26	20	300	60	900	100
40093042	19	3/4 "	29	20	300	60	900	100
40093043	20	1 "	36	20	300	60	900	100

Rubber/PVC Mixed Air Hose



Material:

Good quality materials make our hose steady performance.

Temperature:

From -5°C to +65°C

Production:

Advanced technology and equipment to make the best quality rubber mixed air hose.

Characteristics:

The surface of the hose is not shining/bright, and looks like rubber. It can have the same working pressure with the rubber hose.

Code	I.D.		O.D.	W.P.		B.P.		Length
	mm	inch	mm	bar	psi	bar	psi	m/roll
40093186	6.4	1/4 "	12	20	300	60	900	100
40093187	8	5/16 "	14	20	300	60	900	100
40093188	10	3/8 "	16	20	300	60	900	100
40093189	13	1/2 "	20	20	300	60	900	100
40093191	16	5/8 "	25	20	300	60	900	100
40093192	19	3/4 "	28	20	300	60	900	100
40093193	25	1 "	34	20	300	60	900	100



RUBBER AIR HOSE

Rubber Air Hose Black Anti-Static 20 Bar



Lining : Electrically conductive SBR rubber.

Cover : Smooth black SBR rubber

Construction:

All rubber construction complies with EN2398 specification.

- Improved flexibility, particularly in external applications where low temperatures can cause flexing problems with PVC or hybrid hoses.
- Available with an anti-static liner for critical applications
- Better coupling retention due to rubber lining for safer use in application.
- Excellent resistance to external abrasion when being dragged.
- Good value for money.
- Burst Ratio 3:1

Temperature Range: From -35°C to +80°C.

Code	I.D.		O.D.	W.P.		B.P.		Length
	mm	inch	mm	bar	psi	bar	psi	m/roll
40093501	5	3/16"	12	20	300	60	900	100
40093502	6	1/4"	13	20	300	60	900	100
40093503	8	5/16"	15	20	300	60	900	100
40093504	10	3/8"	17	20	300	60	900	100
40093505	13	1/2"	20	20	300	60	900	100
40093506	16	5/8"	25	20	300	60	900	50
40093507	19	3/4"	29	20	300	60	900	50
40093508	22	7/8"	32	20	300	60	900	50
40093509	25	1"	34	20	300	60	900	50

Twin Air Hose



Lining: Black SBR synthetic rubber

Reinforcement: Braided polyester yarn

Cover: Green/ Yellow EPDM rubber

Construction:

Air hose twin green yellow air operated polyester braided hose, these are top quality rubber hoses, which are joined together alleviating the need to tape hoses together.

Temperature Range: From -35°C to +80°C.

Application: Used for conveying compressed air to and from air operated tools and equipment

Code	I.D.		O.D.	W.P.		B.P.		Length
	mm	inch	mm	bar	psi	bar	psi	m/roll
40093494	6+6	1/4"	13	20	290	60	900	100



RUBBER WATER HOSE

ALWAYS A RELIABLE PARTNER



RUBBER WATER HOSE

Water Suction and Delivery Hose 10Bar



Tube: Black smooth SBR rubber.

Reinforcement: High tensile textile cord with steel helix wire.

Cover: Black, smooth rubber, weather and abrasion resistant, cloth impression.

Temperature: From -25 °C to +80 °C .

Application:

Suitable for water and non corrosive fluids. Suitable for agricultural purposes, industries and public works.

Code	I.D.	O.D.	W.P.	B.P.	Length
	mm	mm	bar	bar	m/roll
2001001	19	30.2	10	30	40
2001002	25	36.2	10	30	40
2001003	32	43.6	10	30	40
2001004	35	46.6	10	30	40
2001005	38	49.6	10	30	40
2001006	45	57	10	30	40
2001007	51	64.4	10	30	40
2001008	57	69	10	30	40
2001009	60	74	10	30	40
2001010	64	78	10	30	40
2001011	76	90.4	10	30	40
2001012	89	105.6	10	30	40
2001013	102	120.4	10	30	40
2001014	115	133.4	10	30	20
2001015	127	145.8	10	30	20
2001016	152	175	10	30	20

Water Venice 10 Rubber Delivery Hose-Wrapped Surface



Tube: Black SBR synthetic rubber compound.

Reinforcement: High tensile textile cord.

Cover: Black, abrasion, ozone and weather resistant, cloth impression.

Temperature: From -25 °C to +80 °C .

Application:

Suitable for water and non corrosive fluids.suitable for agricultural purposes,industries and public works.

Code	I.D.	O.D.	W.P.	B.P.	Max.Length
	mm	mm	bar	bar	m
2002001	19	27	10	30	61
2002002	25	33.2	10	30	61
2002003	32	42	10	30	61
2002004	35	45	10	30	61
2002005	38	48	10	30	61
2002006	45	55	10	30	61
2002007	51	61.4	10	30	61
2002008	57	67.4	10	30	61
2002009	60	70.4	10	30	61
2002010	64	74.8	10	30	61
2002011	76	87.6	10	30	61
2002012	89	101.8	10	30	61
2002013	102	114.8	10	30	61

Water Venice 20 Rubber Delivery Hose-Wrapped Surface



Tube: Black SBR synthetic rubber compound.

Reinforcement: High tensile textile cord.

Cover: Black, abrasion, ozone and weather-resistant, cloth impression.

Temperature: From -25 °C to +80 °C

Application:

Mandrel built water delivery hose suitable for water and non corrosive fluids.suitable for agricultural purposes,industries and public works.

Code	I.D.		O.D.	W.P.		B.P.	Max.Length	
	mm		mm	bar		bar	m	
2003001	19		27.2	20		60	61	
2003002	25		33.4	20		60	61	
2003003	32		42.8	20		60	61	
2003004	35		45.8	20		60	61	
2003005	38		48.8	20		60	61	
2003006	45		57	20		60	61	
2003007	51		63	20		60	61	
2003008	57		69	20		60	61	
2003009	60		72	20		60	61	
2003010	64		76	20		60	61	
2003011	76		90	20		60	61	
2003012	89		103	20		60	61	
2003013	102		120	20		60	61	

Water Amzon 20 Water Hose 20Bar (Long Length)



Tube: Black, seamless synthetic

Reinforcement: High strength synthetic yarn.

Cover: Black, seamless synthetic rubber compound and weathering resistant rubber compound.

Temperature: From -20°C to +90°C

Application:

Designed to convey water, non aggressive fluids and compressed air in various industrial and agricultural applications.

Code	I.D.		O.D.	W.P.		B.P.		Weight	Max.Length
	mm	Inch	mm	bar	psi	bar	psi	kg/m	m/roll
2004001	5	3/16"	12	20	300	60	900	0.13	100
2004002	6	1/4"	13	20	300	60	900	0.15	100
2004003	8	5/16"	15	20	300	60	900	0.23	100
2004004	10	3/8"	17	20	300	60	900	0.26	100
2004005	13	1/2"	22	20	300	60	900	0.36	100
2004006	16	5/8"	25	20	300	60	900	0.53	50
2004007	19	3/4"	29	20	300	60	900	0.64	50
2004008	22	7/8"	32	20	300	60	900	0.75	50
2004009	25	1"	36	20	300	60	900	0.85	50



RUBBER WATER HOSE

Water Amzon 20 Textile Hose-Extruded Wrapped Surface



Tube: Black SBR, seamless synthetic rubber.

Reinforcement: High strength synthetic fabrics.

Cover: Black, seamless synthetic and weathering resistant rubber compound.

Temperature: From -20°C to +90°C

Application:

Designed to convey water, non aggressive fluids and compressed air in various industrial and agricultural applications.

Code	I.D.		O.D.	W.P.		B.P.		Weight	Max.Length.
	mm	inch	mm	bar	psi	bar	psi	kg/m	m/roll
2005001	5	3/16"	12	20	300	60	900	0.13	100
2005002	6	1/4"	13	20	300	60	900	0.15	100
2005003	8	5/16"	15	20	300	60	900	0.23	100
2005004	10	3/8"	17	20	300	60	900	0.26	100
2005005	13	1/2"	22	20	300	60	900	0.36	100
2005006	16	5/8"	25	20	300	60	900	0.53	50
2005007	19	3/4"	29	20	300	60	900	0.64	50
2005008	25	1"	36	20	300	60	900	0.85	50

Water Snake 10-Corrugated Water S/D Hose



Tube: Black, smooth, synthetic rubber.

Reinforcement: High strength synthetic cord and helix wire.

Cover: Black, Corrugated, (wrapped finish) synthetic rubber, weathering and ozone resistant.

Temperature: From -30°C to +70°C

Application:

Mandrel built hardwall hose for suction and discharge of water and non corrosive fluids. Suitable for agricultural, industrial and other applications.

Code	I.D.	O.D.	W.P.	B.P.	Max.Length
	mm	mm	bar	bar	m
2006001	19	30	10	30	40
2006002	25	37	10	30	40
2006003	32	44	10	30	40
2006004	35	47	10	30	40
2006005	38	50	10	30	40
2006006	45	57	10	30	40
2006007	51	63	10	30	40
2006008	57	69	10	30	40
2006009	60	73	10	30	40
2006010	64	76	10	30	40
2006011	76	90	10	30	40
2006012	89	107	10	30	40
2006013	102	122	10	30	40
2006014	115	135	10	30	20
2006015	127	148	10	30	20
2006016	152	176	10	30	20

EPDM Water Hose-Smooth Surface,Fiber Braid



Tube: EPDM rubber

Reinforcement: High tensile strength textile yarn braided

Color: Black,gray,yellow,red,blue,white.

Cover: EPDM rubber

Work Temperature: From -40°C to +121°C

Standard: ISO 2398; BS2050

Application: For the transportation of high pressure air or water liquid

Code	I.D.		O.D.		W.P.		Reinforce Layer	Weight	Unit Length
	in	mm	in	mm	bar	psi		kg/m	m/roll
2007001	3/16"	4.8	0.45	11.5	20	60	1	0.15	100
2007002	1/4"	6.4	0.63	16	20	60	1	0.18	100
2007003	5/16"	7.9	0.59	15.0	20	60	1	0.22	100
2007004	3/8"	9.5	0.75	19.1	300	60	1	0.27	100
2007005	1/2"	12.7	0.91	23.1	300	60	1	0.40	100
2007006	5/8"	15.9	0.96	24.5	300	60	1	0.50	100
2007007	3/4"	19.1	1.14	29.0	300	60	1	0.75	100
2007008	3/4"	19.1	1.18	30.0	300	60	2	0.80	100
2007009	1"	25.4	1.42	36.1	300	60	1	0.95	100
2007010	1"	25.4	1.42	36.1	300	60	2	0.95	100
2007011	1 1/4"	31.8	1.75	44.5	300	60	2	0.70	50
2007012	1 1/2"	38.1	2"	54.0	300	60	2	0.85	50

White Washdown Hose



Tube: White EPDM

Reinforcement: High tensile strength textile yarn braided

Cover: White EPDM

Temperature: From -40°C to +125°C

Application:

This hose is primarily designed for use in food processing plants, dairies, packing houses, bottling plants, breweries, canneries, and creameries

Code	I.D.		O.D.	W.P.		B.P.		Max.Length
	mm	Inch	mm	bar	psi	bar	psi	m/roll
2008000	6	1/4"	13	20	300	60	900	100
2008001	10	3/8"	17	20	300	60	900	100
2008002	13	1/2"	21	20	300	60	900	100
2008003	16	5/8"	25	20	300	60	900	100
2008004	19	3/4"	30	20	300	60	900	100
2008005	25	1"	35	20	300	60	900	100



RUBBER WATER HOSE

Layflat Water Discharge Hose



Tube: Black, smooth, synthetic rubber.

Reinforcement: High strength synthetic cord.

Cover: Black, smooth (wrapped finish) synthetic rubber, weathering and ozone resistant.

Temperature: From -20°C to +70°C

Application:

Light Weight and lay flat softwall hose designed for the discharge of waste water domestic applications.

Code	I.D.		O.D.	W.P.		B.P.		Max.Length	
	mm	inch	mm	bar	psi	bar	psi	m/roll	ft
2009000	12.7	1/2"	20	10	150	30	450	60	200
2009001	15.9	5/8"	23.3	10	150	30	450	60	200
2009002	19.1	3/4"	26.5	10	150	30	450	60	200
2009003	22.2	7/8"	30	10	150	30	450	60	200
2009004	25.4	1"	32	10	150	30	450	60	200
2009005	28.6	1 1/8"	35	10	150	30	450	60	200
2009006	30.2	1 3/16"	38	10	150	30	450	60	200
2009007	31.8	1 1/4"	39	10	150	30	450	60	200
2009008	33.3	1 5/16"	41	10	150	30	450	60	200
2009009	34.9	1 3/8"	43	10	150	30	450	60	200
2009010	38.1	1 1/2"	46	10	150	30	450	60	200
2009011	39.7	1 9/16"	47.5	10	150	30	450	60	200
2009012	41.3	1 5/8"	49	10	150	30	450	60	200
2009013	44.5	1 3/4"	52.5	10	150	30	450	60	200
2009014	47.6	1 7/8"	55	10	150	30	450	60	200
2009015	50.8	2"	58	10	150	30	450	60	200
2009016	54	2 1/8"	62	10	150	30	450	60	200
2009017	57.2	2 1/4"	65	10	150	30	450	60	200
2009018	60.3	2 3/8"	68	10	150	30	450	60	200
2009019	63.5	2 1/2"	72	10	150	30	450	60	200
2009020	66.7	2 5/8"	75	10	150	30	450	40	130
2009021	69.9	2 3/4"	77.5	10	150	30	450	40	130
2009022	73	2 7/8"	81	10	150	30	450	60	200
2009023	76	3"	85	6	90	30	270	60	200
2009024	114.3	4 1/2"	123	6	90	30	270	20	100
2009025	127	5"	137	6	90	30	270	20	100
2009026	152.4	6"	164	6	90	30	270	20	100
2009027	168.3	6 5/8"	181	6	90	30	270	20	100
2009028	203.2	8"	217	6	90	30	270	20	100
2009029	219.1	8 5/8"	233	6	90	30	270	20	100
2009030	254	10"	268	5	75	30	225	10	40
2009031	304.8	12"	319	5	75	30	225	10	40

Rubber Tank Cleaning Hose



Tube:

Black and smooth EPDM

Reinforcement:

High strength synthetic plies and two stainless stranded static wires trailing of each end

Cover:

Black, weather and aging resistant EPDM

Work Temperature:

From -30°C to +100°C .

Resistor Parameters:

Electrical conduction inner wall R<10Ω,Electrical conduction outer wall R<10Ω

Application:

It is a high pressure,special hose for cleaning cargo and bulk storage tanks and tankers,barges, in terminals and refineries.

Code	I.D.		O.D.	W.P.		B.P.		Max.Length	
	mm	inch	mm	bar	psi	bar	psi	m/roll	ft.
20101102	38	1-1/2"	54	25	375	75	1125	60	200
20101502	51	2"	68	25	375	75	1125	60	200

Rubber Sewer Cleaning Hose 250bar



Tube: SBR, black, smooth

Reinforcement: Textile yarn braided

Cover: NR/BR, black, smooth, highly abrasion-proof, weather resistant

Temperature range: From -35°C up to +80°C **Safety:** 2.5:1

Code	I.D.		O.D.	W.P.		B.P.		KG
	mm	inch	mm	bar	psi	bar	psi	Kg/m
20113205	13	1/2"	25	250	3750	625	9375	0.46
20113206	19	3/4"	31	250	3750	625	9375	0.61
20113207	25	1"	39	250	3750	625	9375	0.86
20113208	32	1-1/4"	48	250	3750	625	9375	1.27



Rubber Hot Water Hose

ALWAYS A RELIABLE PARTNER

Hot Water Delivery Hose (Mandrel)



Tube: Smooth, black EPDM rubber

Reinforcement: High strength synthetic cord yarn

Cover: Black, wrapped finish EPDM rubber, heat, weather and ozone resistant.

Working Temperature: From -40°C to +120°C

Application:

Rubber hot water delivery hose, for water that is even light acid, suitable for applications in chemical industries, heat resistant cover. Soft wall and flexible and easy to handle.

Code	I.D.		O.D.	W.P.		B.P.		Weight	Max.Length
	mm	inch	mm	bar	psi	bar	psi	kg/m	m/roll
40093001	6	1/4"	14	10	150	30	450	0.17	100
40093002	8	5/16"	16	10	150	30	450	0.2	100
40093003	10	3/8"	18	10	150	30	450	0.24	100
40093004	13	1/2"	22	10	150	30	450	0.34	100
40093005	16	5/8"	26	10	150	30	450	0.45	100
40093006	19	3/4"	29	10	150	30	450	0.52	100
40093007	25	1"	37	10	150	30	450	0.7	100
40093008	32	1-1/4"	45	10	150	30	450	1.01	60
40093009	38	1-1/2"	51	10	150	30	450	1.17	60
40093010	51	2"	64.8	10	150	30	450	1.74	60
40093011	64	2-1/2"	78.6	10	150	30	450	2.2	60
40093012	76	3"	92.2	10	150	30	450	2.98	60
40093013	102	4"	119.4	10	150	30	450	4.06	60
40093014	127	5"	145.6	10	150	30	450	5.48	20
40093015	152	6"	170.6	10	150	30	450	6.48	20

Hot Water Suction and Discharge Hose



Tube: Smooth, black EPDM rubber

Reinforcement: High strength synthetic cord yarn with helix wire

Cover: Black smooth wrapped finish EPDM rubber, heat, weathering and ozone resistant

Working Temperature: From -40°C to +120°C

Application:

Excellent flexible hose for suction and discharge of hot water, even light acid, suitable for application in chemical industries, weather and heat resistant wrapped cover.

Code	I.D.		O.D.	W.P.		B.P.		Max.Length
	mm	inch	mm	bar	psi	bar	psi	m/roll
40093016	19	3/4"	29	10	150	30	450	60
40093017	25	1"	36	10	150	30	450	60
40093018	32	1-1/4"	43.5	10	150	30	450	60
40093019	38	1-1/2"	49	10	150	30	450	60
40093020	51	2"	63	10	150	30	450	60
40093021	64	2-1/2"	78	10	150	30	450	60
40093022	76	3"	91	10	150	30	450	60
40093023	102	4"	120	10	150	30	450	60
40093024	127	5"	145.5	10	150	30	450	20
40093025	152	6"	174	10	150	30	450	20
40093026	203	8"	225.5	10	150	30	450	10



Rubber Hot Water Hose

EPDM Hot Water Hose



Tube: EPDM with synthetic Rubber **Reinforcement:** 1 or 2 layer of fiber braid

Cover:

Abrasion, heat, ozone and weather resistant, smooth epdm rubber, ISO 2398; BS2050 & black,gray,yellow,red,blue,white

Working Temperature: From -40°C to +121°C

Application:

For the transportation of high pressure air or water liquid

Code	I.D.		O.D.	W.P.		B.P.		Reinforce Layer	Weight	Max.Length
	mm	inch		bar	psi	bar	psi		kg/m	m/roll
40093050	4.8	3/16"	11.5	20	300	60	900	1	0.15	100
40093051	6.4	1/4"	16	20	300	60	900	1	0.18	100
40093052	7.9	5/16"	15	20	300	60	900	1	0.22	100
40093053	9.5	3/8"	19.1	20	300	60	900	1	0.27	100
40093054	12.7	1/2"	23.1	20	300	60	900	1	0.4	100
40093055	15.9	5/8"	24.5	20	300	60	900	1	0.5	100
40093056	19.1	3/4"	29	20	300	60	900	1	0.75	100
40093057	19.1	3/4"	30	20	300	60	900	2	0.8	100
40093058	25.4	1"	36.1	20	300	60	900	1	0.95	100
40093059	25.4	1"	36.1	20	300	60	900	2	0.95	100
40093060	31.8	1-1/4"	44.5	20	300	60	900	2	0.7	50
40093061	38.1	1-1/2"	54	20	300	60	900	2	0.85	50

Non-Conductive Furnace Door Hose



Tube: EPDM, white, smooth and non-conductive.

Reinforcement: 2 ply synthetic fabric.

Cover: Glass fibre ply impregnated with heat and flame resistant synthetic rubber.

Working Temperature: From -40°C to +130°C, cover to +600°C

Application:

The non-conductive furnace door hose is designed for conveying cooling water to furnace doors in steel mills, glass plants an similar operations.

Code	I.D.		O.D.	Reinforcement	W.P.		Max.Length
	mm	inch			bar	psi	
40093193	12.7	1/2"	23	2	10	150	50
40093194	19	3/4"	30	2	10	150	50
40093195	25.4	1"	35	2	10	150	50
40093196	31.8	1-1/4"	45	2	10	150	50
40093197	38.1	1-1/2"	51	2	10	150	50
40093198	50.8	2"	64	2	10	150	50

EPDM Radiator Hose



Tube: Black EPDM rubber

Reinforcement: High tensile textile cords.

Cover: Black EPDM – heat, abrasion and ozone resistant.

Working Temperature: From -40°C to +121°C

Application:

Abrasion resistant, weather resistant and ozone resistant. It is flexible, light in Weight, anti-bending and less distortion.

Code	I.D.		O.D.	WALL THICKNES	W.P.		Max.Length
	mm	inch	mm	mm	bar	psi	
40093323	13	1/2"	21	4	10	150	60
40093300	16	5/8"	24	4	10	150	60
40093301	18	23/32"	26	4	10	150	60
40093302	20	13/16"	28	4	10	150	60
40093303	22	7/8"	30	4	10	150	60
40093304	25	1"	33	4	10	150	60
40093305	28	1-1/8"	36	4	10	150	60
40093306	30	1-3/16"	38	4	10	150	60
40093307	32	1-1/4"	40	4	10	150	60
40093308	35	1-3/8"	43	4	10	150	60
40093309	38	1-1/2"	48	5	10	150	60
40093310	40	1-9/16"	50	5	10	150	60
40093311	42	1-5/8"	52	5	10	150	60
40093312	45	1-3/4"	55	5	10	150	60
40093313	48	1-7/8"	58	5	10	150	60
40093314	51	2"	61	5	10	150	60
40093315	55	2-1/6"	65	5	10	150	60
40093316	57	2-1/4"	67	5	10	150	60
40093317	60	2-3/8"	70	5	10	150	60
40093318	63	2-1/2"	73	5	10	150	60
40093319	70	2-3/4"	80	5	10	150	60
40093320	76	3"	86	5	10	150	60
40093321	80	3-1/8"	90	5	10	150	60
40093322	90	3-1/2"	102	6	10	150	60
40093323	102	4"	114	6	10	150	60
40093324	110	4-5/16"	122	6	10	150	60



OIL & PETROLEUM HOSE

ALWAYS A RELIABLE PARTNER

SAE 100R4-Hydraulic Oil S/D Hose



Tube: Hydraulic oil resistant special synthetic rubber

Reinforcement: High tensile synthetic textile and steel wire helix

Cover: Oil ,heat ,abrasion, ozone and weather resistant special synthetic rubber ,Wrapped Surface

Temperature: From -40°C to +121°C **Hose Type:** Mandrel Built

Application:

In oil return lines of hydraulic systems of industrial and agricultural

Code	I.D.		O.D.		W.P.		B.P.		Bend Radius	Weight	Length
	mm		mm		bar	psi	bar				
3001001	19		30		21	305	84		127	0.76	40
3001002	25.4		35.5		17	247	68		152	0.88	40
3001003	31.8		44		14	203	56		203	1.17	40
3001004	38.1		51		10	145	40		254	1.51	40
3001005	44.5		58.1		10	140	40		275	1.65	40
3001006	51		64		7	102	28		305	1.9	40
3001007	63.5		77		4	58	16		356	2.54	40
3001008	76.2		91		4	58	16		457	3.08	40
3001009	89		103.5		3	44	12		533	3.36	40
3001010	102		117.5		2.5	36	10		610	3.9	40

Fuel Oil Rubber Hose



Tube: NBR synthetic rubber, black, smooth

Reinforcement: High tensile synthetic yarn braided high tensile textile plies.

Cover: Ozone ,oil resistant synthetic nitrile rubber.

Temperature: From -40°C to +100°C **Hose Type:** Extruded Smooth.

Application:

Soft wall hose for low pressure lines, return lines, and drain lines. Used in fuel system or in the crankcase of internal combustion engines in mobile (truck, bus, off highways vehicles), stationary and marine applications.

Code	I.D.		O.D.	W.P.		B.P.		Weight	Max.Length.
	mm	inch		bar	psi	bar	psi		
3002001	5	3/16"	12	20	300	60	900	0.13	100
3002002	6	1/4"	13	20	300	60	900	0.15	100
3002003	8	5/16"	15	20	300	60	900	0.23	100
3002004	10	3/8"	17	20	300	60	900	0.26	100
3002005	12.7	1/2"	21	20	300	60	900	0.36	100
3002006	16	5/8"	26	20	300	60	900	0.53	100
3002007	19	3/4"	30	20	300	60	900	0.64	100
3002008	25	1"	35	20	300	60	900	0.76	100



OIL & PETROLEUM HOSE

Fuel&Oil S/D Hose



Tube: NBR, black, electrically conductive, smooth.

Reinforcement: High strength synthetic cord, anti-static copper wire available, and steel helix wire.

Cover:

Black, resistant to ozone and weather, abrasion resistant, resistant to oil, electrically conductive, cloth impression.

Temperature: From -30°C to +90°C

Application:

Mandrel hard wall hose used for the suction and delivery of petroleum products with aromatic content up to 30%.

Code	I.D.		O.D.	W.P.		B.P.	Max.Length	
	mm		mm	bar		bar	m	
3003001	19		31	10		30	61	
3003002	25		37	10		30	61	
3003003	32		44	10		30	61	
3003004	38		50	10		30	61	
3003005	51		64	10		30	61	
3003006	64		78	10		30	61	
3003007	76		90	10		30	61	
3003008	89		106	10		30	61	
3003009	102		121	10		30	61	
3003010	115		134	10		30	40	
3003011	127		146	10		30	20	
3003012	152		176	10		30	20	

JYM Siberia 20 Frost Resistant Oil Hose-Extruded Smooth Surface



Tube:

Black, seamless NBR conductive rubber, suitable to convey fuel and oils with aromatic content up to 50%.

Reinforcement: High strength synthetic fabrics.

Cover:

Red, seamless NBR rubber, resistant to fuel, oil, and weathering.

Temperature: From -40°C to +90°C

Application:

Suitable for delivery of fuels and for lubrication and greasing in different services.

Code	I.D.		O.D.	W.P.		B.P.		Weight	Max.Length.
	mm	inch	mm	bar	psi	bar	psi	kg/m	m/roll
3004001	5	3/16"	12	20	300	60	900	0.13	100
3004002	6	1/4"	13	20	300	60	900	0.15	100
3004003	8	5/16"	15	20	300	60	900	0.23	100
3004004	10	3/8"	17	20	300	60	900	0.26	100
3004005	13	1/2"	22	20	300	60	900	0.36	100
3004006	16	5/8"	25	20	300	60	900	0.53	50
3004007	19	3/4"	29	20	300	60	900	0.64	50
3004008	22	7/8"	32	20	300	60	900	0.75	50
3004009	25	1"	36	20	300	60	900	0.85	50

JYM IVAN 10 Anti-Static Rubber Oil Delivery Hose



Tube: Black, smooth, NBR rubber.

Reinforcement: High strength synthetic cord , anti-static copper wire available.

Cover:

Black, smooth (wrapped finish), synthetic rubber, weathering and oil resistant .

Temperature: From -30°C to +70°C

Application:

Soft wall hose used for the delivery of petroleum products with aromatic content up to 30% delivery gasoline upon request

Code	I.D.	O.D.	W.P.	B.P.	Max.Length
	mm	mm	bar	bar	m
3005001	19	29	10	30	61
3005002	25	35	10	30	61
3005003	32	43	10	30	61
3005004	38	50	10	30	61
3005005	51	63	10	30	61
3005006	64	76	10	30	61
3005007	76	90	10	30	61
3005008	89	105	10	30	61
3005009	102	120	10	30	61
3005010	115	133	10	30	20
3005011	127	146	10	30	20
3005012	150	174	10	30	20

JYM IVAN 20 Anti-Static Rubber Oil Delivery Hose



Tube: Black, smooth, NBR rubber.

Reinforcement: High strength synthetic cord , anti-static copper wire available.

Cover:

Black, wrapped finish, synthetic rubber, weathering and oil resistant .

Temperature: From -20°C to +70°C

Application:

Soft wall hose used for the delivery of petroleum products with aromatic content up to 30%.

Code	I.D.	O.D.	W.P.	B.P.	Max.Length
	mm	mm	bar	bar	m
3006001	19	29	20	60	61
3006002	25	35	20	60	61
3006003	32	43	20	60	61
3006004	38	50	20	60	61
3006005	51	63	20	60	61
3006006	64	76	20	60	61
3006007	76	90	20	60	61
3006008	89	105	20	60	61
3006009	102	120	20	60	61
3006010	115	133	20	60	20
3006011	127	146	20	60	20
3006012	150	174	20	60	20



OIL & PETROLEUM HOSE

JYM R4 10Bar-Hydraulic Oil S/D Hose



Tube: Black, smooth, synthetic rubber, oil resistant (except ester base).

Reinforcement: High strength synthetic cord plus steel helix wire.

Cover:

Black, wrapped finish, synthetic rubber, weathering resistant

Temperature: From -40°C to +100°C

Application:

Hard wall hose used for the suction and delivery of oil in hydraulic systems.

Code	I.D. mm	O.D. mm	W.P. bar	B.P. bar	Max.Length m
3007001	19	31	10	30	61
3007002	25	37	10	30	61
3007003	32	44	10	30	61
3007004	38	50	10	30	61
3007005	51	63	10	30	61
3007006	64	76	10	30	61
3007007	76	90	10	30	61
3007008	89	107	10	30	61
3007009	102	122	10	30	61
3007010	115	135	10	30	20
3007011	127	148	10	30	20
3007012	150	176	10	30	20

JYM Mountain 10 Oil S/D Hose



Tube: Black, smooth, NBR rubber.

Reinforcement: High strength synthetic cord plus steel helix wire.

Cover:

Black, corrugated finish, synthetic rubber, weathering and oil resistant.

Temperature: From -20°C to +70°C

Application:

Hard wall hose used for the suction and delivery of petroleum products with aromatic content up to 30%.

Code	I.D. mm	O.D. mm	W.P. bar	B.P. bar	Max.Length m
3008001	19	31	10	30	61
3008002	25	37	10	30	61
3008003	32	44	10	30	61
3008004	38	50	10	30	61
3008005	51	63	10	30	61
3008006	64	76	10	30	61
3008007	76	90	10	30	61
3008008	89	107	10	30	61
3008009	102	122	10	30	61
3008010	115	135	10	30	20
3008011	127	148	10	30	20
3008012	150	176	10	30	20

JYM EVAN 20-Rubber Oil Delivery Hose



Tube: Black, smooth, NBR rubber.

Reinforcement: High strength synthetic cord , anti-static copper wire available.

Cover:

Black, wrapped finish, synthetic rubber, weathering and oil resistant.

Temperature: From -20°C to +70°C

Application:

Soft wall hose used for the delivery of petroleum products with aromatic content up to 30%.

Code	I.D.	O.D.	W.P.	B.P.	Max.Length
	mm	mm	bar	bar	m
3009001	19	29	20	60	61
3009002	25	35	20	60	61
3009003	32	43	20	60	61
3009004	38	50	20	60	61
3009005	51	63	20	60	61
3009006	64	76	20	60	61
3009007	76	90	20	60	61
3009008	89	105	20	60	61
3009009	102	120	20	60	61
3009010	115	133	20	60	20
3009011	127	146	20	60	20
3009012	150	174	20	60	20

Tank Truck Hose 150 PSI-Corrugated Surface Also Available



Tube: Black high grade of oil resistant Nitrile (NBR).

Reinforcement: Multiple textile plies with dual helix wire

Cover:

Black abrasion, oil, weather & ozone resistant Neoprene(CR)

Temperature: From -30°C to + 80°C.

Application:

The industry standard for tank truck, in-plant and oil field loading operations requiring a strong and flexible hose. Handles gasoline, oil and other petroleum based products.

Code	I.D.		O.D.		Standard Length		Bend Radius		Working Pressure		Approx Weight
	in	mm	in	mm	ft	m	in	mm	psi	bar	kg/m
3010001	1"	25.4	1.421	36.1	200	60	6"	150	150	10	0.8
3010002	1 1/4"	31.8	1.673	42.5	200	60	8"	200	150	10	0.98
3010003	1 1/2"	38.1	1.921	48.8	200	60	10"	250	150	10	1.16
3010004	2"	50.8	2.457	62.4	200	60	12"	300	150	10	1.69
3010005	2 1/2"	63.5	2.957	75.1	200	60	16"	400	150	10	2.07
3010006	3"	76.2	3.480	88.4	200	60	20"	500	150	10	2.75
3010007	4"	101.6	4.543	115.4	200	60	28"	700	150	10	4.06
3010008	5"	127	5.728	145.5	200	60	40"	1000	150	10	6.81
3010009	6"	152.4	6.791	172.5	100	30	48"	1200	150	10	9.1
3010010	8"	203.2	8.921	226.6	100	30	64"	1600	150	10	13.25



OIL & PETROLEUM HOSE

Tank Truck Hose 300 PSI-Corrugated Surface Also Available



Tube: Black high grade of oil resistant Nitrile (NBR).

Reinforcement: Multiple textile plies with dual helix wire

Cover:

Corrugated black abrasion, oil, weather & ozone resistant Neoprene(CR).

Temperature: From -30°C to + 80°C.

Application:

The industry standard for tank truck, in-plant and oil field loading operations requiring a strong and flexible hose. Handles gasoline, oil and other petroleum based products. The wide corrugation provides superior kink resistance and outstanding flexibility.

Code	I.D.		O.D.		Standard Length		Bend Radius		Working Pressure		Approx Weight
	in	mm	in	mm	ft	m	in	mm	psi	bar	
3011001	1 1/2"	38.1	1.953	49.6	200	60	10"	250	300	20	1.25
3011002	2"	50.8	2.504	63.6	200	60	12"	300	300	20	1.87
3011003	2 1/2"	63.5	3.004	76.3	200	60	16"	400	300	20	2.3
3011004	3"	76.2	3.622	92.0	200	60	20"	500	300	20	3.23
3011005	4"	101.6	4.717	119.8	200	60	28"	700	300	20	4.97
3011006	6"	152.4	0.925	175.9	100	30	48"	1200	300	20	9.3
3011007	8"	203.2	9.050	230.0	100	30	64"	1600	300	20	14.5

Gasoline Dispenser Rubber Hose



Tube: NBR **Reinforcement:** Single high-strength wire braided.

Cover: EPDM **Color:** Black, Blue, Red and Green etc

Standard Length: 20m, 50m (Random Length)

Temperature: From -40°C to + 100°C.

Application:

For fuel dispensing pump applications, including gasoline, diesel, oxygenated fuels (up to a maximum of 15% oxygenated compounds), lubricating oil, and other mineral oil etc.

Code	I.D.		O.D.	W.P.		B.P.		Length	Mesurment	Weight
	inch	mm	mm	bar	psi	bar	psi	m	cbm/roll	kg/m
30121001	5/8"	15.9	25.4	18	258	72	1032	50	0.07	0.57
30121002	3/4"	19	28	18	258	72	1032	50	0.08	0.65
30121003	1"	25	35.5	18	258	72	1032	50	0.124	0.82

Aircraft Fuel Hose



Tube: NBR rubber, black color, anti-static, smooth.

Reinforcement: High strength plies of synthetic cord.

Cover:

Rubber, black color, anti-static, self-extinguishing, resistant to abrasion, weather, and contact with hydrocarbons, smooth, cloth finish.

Temperature: From -30°C to +70°C **Standard:** In accordance with EN 1825

Application:

- Delivery hose for handling aviation fuels.
- Specifically designed for conveying kerosene and hydrocarbons with aromatic content up to 50%
- Suitable for use on tank truck reels.

Code	I.D.		O.D.	W.P.		B.P.		Length	Min. Reel Dia.	Weight
	inch	mm		bar	psi	bar	psi			
30131001	3/4"	19	30.8	20	300	80	1200	60	140	0.65
30131002	1"	25	38.8	20	300	80	1200	60	200	0.96
30131003	1-1/4"	32	45.8	20	300	80	1200	60	225	1.23
30131004	1-1/2"	38	51.8	20	300	80	1200	60	270	1.43
30131005	2"	51	66.6	20	300	80	1200	60	400	1.98
30131006	2-1/2"	63.5	80.4	20	300	80	1200	60	600	2.6
30131007	3"	76	80.4	20	300	80	1200	60	600	3.37
30131008	4"	102	121.6	20	300	80	1200	60	900	4.8

Aircraft Fuel S&D Hose



Tube: Black, smooth NBR rubber compound.

Reinforcement:

Steel wire + high-strength synthetic layer with 2 cross copper wires for hose grounding

Cover:

Black, cloth-textured, flame retardant and anti-static ($r < 106 \text{ ohm/m}$), cloth-textured or rubber compound, resistant to chemical products, ozone and weathering

Temperature: From -30°C to +70°C

Application:

Transport hose for ground refueling of aircraft. Fuels with up to 50% aromatic content

Code	I.D.		O.D.	W.P.		B.P.		Length	Min. Reel Dia.	Weight
	inch	mm		bar	psi	bar	psi			
30141001	3/4"	19	33.8	20	300	80	1200	60	140	0.97
30141002	1"	25	41.8	20	300	80	1200	60	200	1.37
30141003	1-1/4"	32	48.4	20	300	80	1200	60	225	1.78
30141004	1-1/2"	38	54.8	20	300	80	1200	60	270	2.1
30141005	2"	51	70	20	300	80	1200	60	400	3
30141006	2-1/2"	63.5	83.6	20	300	80	1200	60	600	3.9
30141007	3"	76	97	20	300	80	1200	60	600	4.9
30141008	4"	102	127	20	300	80	1200	60	900	7.9



STEAM HOSE

ALWAYS A RELIABLE PARTNER

165 Textile Steam Hose-7Bar



Tube: Black, smooth, resistance to high temperature saturated steam EPDM synthetic rubber.

Reinforcement: High strength synthetic cord

Cover:

Black, smooth(wrapped finish)synthetic EPDM rubber. High temperature, weathering and ozone resistant.

Temperature: From -40°C to +165°C

Application:

Reinforced steam hose, designed for saturated steam with 6bar in maximum working pressure; Exhausting the water after using to extend the service life.

Code	I.D.		O.D.		W.P.		B.P.		Weight	Coil Length
	mm	inch	mm	inch	bar	psi	bar	psi	kg/m	m
ST13	13	1/2"	25	1"	6	90	60	900	0.39	40
ST16	16	5/8"	30	1 1/16"	6	90	60	900	0.56	40
ST19	19	3/4"	33	1 19/64"	6	90	60	900	0.63	40/61
ST25	25	1"	40	1 19/32"	6	90	60	900	0.81	40/61
ST32	32	1-1/4"	48	1 29/32"	6	90	60	900	1.11	40/61
ST38	38	1-1/2"	54	2 1/8"	6	90	60	900	1.28	40/61
ST51	51	2"	69	3 23/32"	6	90	60	900	1.89	40/61
ST63	63	2-1/2"	81	3 13/64"	6	90	60	900	2.23	40/61
ST76	76	3"	94	3 45/64"	6	90	60	900	2.76	40/61
ST102	102	4"	122	4 13/16"	6	90	60	900	4.02	40/61

210 Steel Wire Steam Hose-18Bar



Tube: Black, smooth, resistance to high temperature EPDM synthetic rubber.

Reinforcement: One or two plies steel wire braided

Cover:

Black, smooth(wrapped finish)synthetic EPDM rubber. High temperature, oil and weathering resistant, pin-pricked.

Temperature: From -40°C to +210°C

Application:

Using in petrochemical industry, shipyard,etc. It could resist the super heated steam of maximum 230°C.

Code	I.D.		O.D.		W.P.		B.P.		Weight	Coil Length
	mm	inch	mm	inch	bar	psi	bar	psi	kg/m	m
RST13	13	1/2"	25	1	18	270	180	2700	0.53	40/61
RST16	16	5/8"	30	1 1/16	18	270	180	2700	0.75	40/61
RST19	19	3/4"	33	1 19/64	18	270	180	2700	0.78	40/61
RST25	25	1"	40	1 19/32	18	270	180	2700	1.03	40/61
RST32	32	1-1/4"	48	1 29/32	18	270	180	2700	1.41	40/61
RST38	38	1-1/2"	54	2 1/8	18	270	180	2700	1.78	40/61
RST51	51	2"	69	3 23/32	18	270	180	2700	2.58	40/61
RST63	63	2-1/2"	81	3 13/64	18	270	180	2700	3.16	40/61
RST76	76	3"	94	3 45/64	18	270	180	2700	4.02	40/61
RST102	102	4"	122	4 13/16	18	270	180	2700	6.22	40/61



STEAM HOSE

Smooth Blue Quality Dairy Washdown Hose



Tube: Smooth white food quality EPDM rubber

Reinforcement: High tensile textile cords

Cover: Smooth blue food quality EPDM rubber

Temperature: From -30°C to +100°C

Safety factor: 3 x working pressure

Conforms to FDA Approved

Application:

This hose is a blue food quality EPDM rubber hose, great for hot water in dairy and hygienic environments and other general wash-down applications. It is reinforced with high tensile textile cords and has a smooth white non-marking EPDM rubber.

Code	I.D.		O.D.		W.P.		B.P.		Weight	Coil Length
	mm	inch	mm	inch	bar	psi	bar	psi	kg/m	m
B1ST5	5	3/16"	11	3/16"	10	150	30	450	0.19	50/100
B1ST6	6	1/4"	13	1/4"	10	150	30	450	0.24	50/100
B1ST8	8	5/16"	15	5/16"	10	150	30	450	0.29	50/100
RST10	10	3/8"	17	3/8"	10	150	30	450	0.33	50/100
B1ST13	13	1/2"	21	1/2"	10	150	30	450	0.45	50/100
B1ST16	16	5/8"	25	5/8"	10	150	30	450	0.66	50/100
B1ST19	19	3/4"	29	3/4"	10	150	30	450	0.75	50/100
B1ST25	25	1"	37	1"	10	150	30	450	1.4	50/100

Wrapped Blue Quality Dairy Washdown Hose



Tube: Smooth white food quality EPDM rubber

Reinforcement: High tensile textile cords

Cover: Wrapped blue food quality EPDM rubber

Temperature: From -30°C to +100°C

Safety factor: 3 x working pressure

Conforms to FDA Approved

Application:

This hose is a blue food quality EPDM rubber hose, great for hot water in dairy and hygienic environments and other general wash-down applications. It is reinforced with high tensile textile cords and has a smooth white non-marking EPDM rubber.

Code	I.D.		O.D.		W.P.		B.P.		Weight	Coil Length
	mm	inch	mm	inch	bar	psi	bar	psi	kg/m	m
B2ST13	13	1/2"	22	1"	10	150	30	450	0.31	50
B2ST16	16	5/8"	26.2	1 1/16"	10	150	30	450	0.43	50
B2ST19	19	3/4"	31	1 19/64"	10	150	30	450	0.52	50
B2ST25	25	1"	37	1 19/32"	10	150	30	450	0.65	50
B2ST32	32	1-1/4"	45.8	1 29/32"	10	150	30	450	1.15	40
B2ST38	38	1-1/2"	51.8	2 1/8"	10	150	30	450	1.33	40
B2ST51	51	2"	65.6	3 23/32"	10	150	30	450	1.71	40



CHEMICAL HOSE

ALWAYS A RELIABLE PARTNER



CHEMICAL HOSE

UHMWPE Chemical Discharge Hose 150PSI



Tube: White, EPDM, smooth, Ultra High Molecular Weight Polyethylene (UHMWPE)

Reinforcement: High strength synthetic cord.

Cover:

Blue, smooth (wrapped finish), EPDM rubber, resistant to chemical, weathering and ozone

Temperature range: From -40°C to +120°C

Application:

Softwall hose designed with Ultra-High Molecular Weight Polyethylene tube, excellent in handling a wide range of chemicals, petroleum products and oils.

Code	I.D.		O.D.	W.P.		B.P.		Max Length	
	inch	mm	mm	bar	psi	bar	psi	m	ft
UCDH19	3/4"	19.1	31	10	150	40	600	60	200
UCDH25	1"	25.4	37	10	150	40	600	60	200
UCDH32	1-1/4"	31.8	44	10	150	40	600	60	200
UCDH38	1-1/2"	38.1	51	10	150	40	600	60	200
UCDH51	2"	50.8	67	10	150	40	600	60	200
UCDH64	2-1/2"	63.5	79	10	150	40	600	60	200
UCDH76	3"	76.2	92	10	150	40	600	60	200
UCDH89	3-1/2"	88.9	105	10	150	40	600	60	200
UCDH102	4"	101.6	118	10	150	40	600	60	200

UHMWPE Chemical S&D Hose 150PSI



Tube: White EPDM, smooth, Ultra High Molecular Weight Polyethylene (UHMWPE)

Reinforcement: High strength synthetic cord and helix wire.

Cover:

Blue, smooth (wrapped finish), EPDM rubber, resistant to chemical, weathering and ozone

Temperature range: From -40°C to +120°C

Application:

Softwall hose designed with Ultra-High Molecular Weight Polyethylene tube, excellent in handling a wide range of chemicals, petroleum products and oils.

Code	I.D.		O.D.	W.P.		B.P.		Max Length	
	inch	mm	mm	bar	psi	bar	psi	m	ft
UCSDH19	3/4"	19.1	31	10	150	40	600	60	200
UCSDH25	1"	25.4	37	10	150	40	600	60	200
UCSDH32	1-1/4"	31.8	44	10	150	40	600	60	200
UCSDH38	1-1/2"	38.1	51	10	150	40	600	60	200
UCSDH51	2"	50.8	67	10	150	40	600	60	200
UCSDH64	2-1/2"	63.5	79	10	150	40	600	60	200
UCSDH76	3"	76.2	92	10	150	40	600	60	200
UCSDH89	3-1/2"	88.9	105	10	150	40	600	60	200
UCSDH102	4"	101.6	118	10	150	40	600	60	200

UHMWPE Chemical S&D hose -Corrugated 200PSI



Inner rubber: EPDM

Reinforcement layer: Synthetic high tensile textile with helix steel wire,static ground.

Cover rubber: EPDM corrugated rubber

Non-Kinking: The internal helical wire structure helps prevent kinking.

Temperature Available: From -40°C to +120°C

Safety factor: 4:1

Color: Blue/Green

Features:

Abrasion and Ozone Resistant.The cover protects the body from stiffening and cracking caused by ozone and UV exposure. It also added abrasion resistance for extended hose life

Application:

Acid Discharge; Acid Suction & Discharge; Chemical Transfer; Chemical Spray Hose

Code	I.D.	O.D.	W.P.		Vaccum Pressure	Bend Radius		Weight	Length	
	inch	inch	psi	bar	bar	inch	mm	kg/m	ft	m
CUCH25	1"	1.45	200	14	0.8	4	100	0.77	200	60
CUCH32	1-1/4"	1.7	200	14	0.8	5	130	0.93	200	60
CUCH38	1-1/2"	1.95	200	14	0.8	6	150	1.06	200	60
CUCH50	2"	2.5	200	14	0.8	8	200	1.59	200	60
CUCH64	2-1/2"	3	200	14	0.8	10	250	1.93	200	60
CUCH76	3"	3.64	200	14	0.8	12	300	3.05	200	60
CUCH102	4"	4.75	200	14	0.8	16	400	4.64	200	60
CUCH152	6"	6.91	200	14	0.8	30	750	8.49	200	60
CUCH203	8"	9.46	200	14	0.8	40	1000	11.34	200	60



FOOD GRADE HOSE

ALWAYS A RELIABLE PARTNER

Food Discharge Hose



Tube: White, EPDM, NBR food quality rubber.

Reinforcement: High strength synthetic cord.

Cover:

Smooth (wrapped finish), synthetic rubber, weathering resistant.

Temperature range: From -40°C to +80°C

Application:

FDA approved food hose designed for the delivery of fatty foods such as milk, edible oil, daily products etc.

Optional Request: NBR Standard F.D.A. Title 21.177.2600

Code	I.D.		O.D.	W.P.		B.P.		Max. Length	
	inch	mm	mm	bar	psi	bar	psi	m	ft
9001001	1/2"	12.7	24	10	150	30	450	60	200
9001002	3/4"	19.1	32	10	150	30	450	60	200
9001003	1"	25.4	38	10	150	30	450	60	200
9001004	1-1/4"	31.8	46	10	150	30	450	60	200
9001005	1-1/2"	38.1	52	10	150	30	450	60	200
9001006	2"	50.8	68	10	150	30	450	60	200
9001007	2-1/2"	63.5	80	10	150	30	450	60	200
9001008	3"	76.2	93	10	150	30	450	60	200
9001009	4"	101.6	120	10	150	30	450	60	200

Food S & D Hose



Tube: White EPDM, smooth, NBR food quality rubber.

Reinforcement: High strength synthetic cord and helix wire.

Cover:

Smooth (wrapped finish), synthetic rubber, weathering resistant.

Temperature range: From -40°C to +80°C

Application:

FDA approved food hose designed for the delivery and suction of fatty foods such as milk, edible oil, daily products etc.

Optional Request: NBR Standard F.D.A. Title 21, 177, 2600 Corrugate (wrapped finish)

Code	I.D.		O.D.	W.P.		B.P.		Vacuum Pressure	Max. Length	
	inch	mm	mm	bar	psi	bar	psi	bar	m	ft
9002001	1/2"	12.7	24	10	150	30	450	0.8	60	200
9002002	3/4"	19.1	32	10	150	30	450	0.8	60	200
9002003	1"	25.4	38	10	150	30	450	0.8	60	200
9002004	1-1/4"	31.8	46	10	150	30	450	0.8	60	200
9002005	1-1/2"	38.1	52	10	150	30	450	0.8	60	200
9002006	2"	50.8	66	10	150	30	450	0.8	60	200
9002007	2-1/2"	63.5	80	10	150	30	450	0.8	60	200
9002008	3"	76.2	93	10	150	30	450	0.8	60	200
9002009	4"	101.6	120	10	150	30	450	0.8	60	200



FOOD GRADE HOSE

UHMWPE Food Grade Hose



Tube: White EPDM, smooth, Ultra High Molecular Weight Polyethylene (UHMWPE), food quality rubber.

Reinforcement: High strength synthetic cord

Cover:

Blue, smooth (wrapped finish), synthetic rubber, resistant to oil, weathering and chemical.

Temperature range: From -40°C to +80°C

Application:

FDA approved food hose designed with ultra-high molecular weight polyethylene tube, transferring all types of corrosive chemicals, medicine and food handling materials.

Optional Request: Standard F.D.A. Title 21, 177,260

Code	I.D.		O.D.	W.P.		B.P.		Max.Length	
	inch	mm	mm	bar	psi	bar	psi	m	ft
9003001	3/4"	19	31	10	150	30	450	60	200
9003002	1"	25	37	10	150	30	450	60	200
9003003	1-1/4"	32	44	10	150	30	450	60	200
9003004	1-1/2"	38	51	10	150	30	450	60	200
9003005	2"	51	67	10	150	30	450	60	200
9003006	2-1/2"	63	80	10	150	30	450	60	200
9003007	3"	76	92	10	150	30	450	60	200
9003008	4"	102	122	10	150	30	450	60	200
9003009	5"	127	142	10	150	30	450	30	100
9003010	6"	152	170	10	150	30	450	30	100
9003011	8"	203	223	10	150	30	450	30	100
9003012	10"	254	278	10	150	30	450	12	40
9003013	12"	304	330	10	150	30	450	12	40

Food Discharge Hose (For Fatty Foods)



Tube: White, smooth, NBR food quality rubber.

Reinforcement: High strength synthetic cord.

Cover:

Red, smooth (wrapped finish), synthetic rubber, oil and weathering resistant.

Temperature range: From -40°C to +80°C

Application:

FDA approved food hose designed for the delivery of fatty foods such as milk, edible oil, daily products & etc.

Optional Request: Standard F.D.A. Title 21, 177.2600.

code	I.D.		O.D.	W.P.		B.P.		Max.Length	
	inch	mm	mm	bar	psi	bar	psi	m/roll	ft
9004001	1/2"	12.7	24	10	150	30	450	60	200
9004002	3/4"	19.1	32	10	150	30	450	60	200
9004003	1"	25.4	38	10	150	30	450	60	200
9004004	1-1/4"	31.8	46	10	150	30	450	60	200
9004005	1-1/2"	38.1	52	10	150	30	450	60	200
9004006	2"	50.8	68	10	150	30	450	60	200
9004007	2-1/2"	63.5	80	10	150	30	450	60	200
9004008	3"	76.2	93	10	150	30	450	60	200
9004009	4"	101.6	120	10	150	30	450	60	200



MULTIPURPOSE HOSE

ALWAYS A RELIABLE PARTNER



MULTIPURPOSE HOSE

Multipurpose Rubber Hose Air /Water



Inner tube: Black smooth synthetic rubber

Reinforcement: High tensile cord

Cover:

Yellow, wrapped surface ozone and aging resistant rubber compound.

Temperature range: From -30°C to +80°C

Application:

Economic Hose for transmission of air, water. Suitable for low pressure painting.

Code	I.D.	O.D.	W.P.	B.P.	Max.Length
	mm	mm	bar	bar	m
4001001	10	17	20	60	61
4001002	13	21	20	60	61
4001003	16	25	20	60	61
4001004	19	27	20	60	61
4001005	25	36	20	60	61
4001006	32	44	20	60	61
4001007	38	50	20	60	61
4001008	51	63	20	60	61
4001009	63	79	20	60	61
4001010	76	92	20	60	61
4001011	102	118	20	60	61

Multipurpose Hose Air /Water /Oil-Smooth Surface



Inner tube: Black smooth synthetic rubber

Reinforcement: High tensile textile yarn

Cover:

Red, ozone and aging resistant rubber compound.

Temperature range: From -30°C to +80°C

Application:

Economic Hose for transmission of air, water, oil. Suitable for low pressure painting.

Code	I.D.	O.D.	W.P.	B.P.	Max.Length
	mm	mm	bar	bar	m
4002001	5	12	20	60	100
4002002	6	13	20	60	100
4002003	8	15	20	60	100
4002004	10	17	20	60	100
4002005	13	22	20	60	100
4002006	16	25	20	60	50
4002007	19	29	20	60	50
4002008	22	32	20	60	50
4002009	25	36	20	60	50



MATERIAL HANDLING HOSE

ALWAYS A RELIABLE PARTNER



MATERIAL HANDLING HOSE

Sand Blast Hose Braid (ISO3861:2010)

**Tube:**

Smooth, black, anti-static, abrasion resistant NR/BR rubber compound. Abrasion according to DIN 53516:1987. Max. 60-70 mm³.

Reinforcement: Textile yarn braided

Cover:

Black, anti-static, weather and abrasion resistant SBR/NBR rubber compound, cloth impression.

Temperature range: From -35°C to +80°C

Application:

Wear-resistant, electric conductive blasting hoses Suitable for any kind of abrasive blasting job. Hose inner tube is made of highest abrasion resistance natural rubber

Marking:

Super Blast-19 19x33MM W.P. 12Bar B.P. 36Bar

Code	I.D.	O.D.	W.P.	B.P.	Coil Length	
	mm	mm	bar	bar	m	ft
5001001	13	27	12	36	20,40	50,100
5001002	19	33	12	36	20,40	50,100
5001003	25	39	12	36	20,40	50,100
5001004	32	48	12	36	20,40	50,100
5001005	38	54	12	36	20,40	50,100

Remarks: Abrasion Loss acc DIN 53516 Max 60mm³, (Abrasion loss 50mm³ Available now)

Sand Blast Hose -2-Ply (ISO3861:2010)

**Tube:**

Smooth, black, anti-static, abrasion resistant NR/BR rubber compound. Abrasion according to DIN 53516:1987. Max. 60-70 mm³.

Reinforcement: High tensile strength fiber

Cover:

Black, anti-static, weather and abrasion resistant SBR/NBR rubber compound, cloth impression.

Temperature range: From -35°C to +80°C

Application:

Wear-resistant, electric conductive blasting hoses Suitable for any kind of abrasive blasting job. Hose inner tube is made of highest abrasion resistance natural rubber

Marking:

Super Blast-19 19x33MM W.P. 12Bar B.P. 36Bar

Code	I.D.	O.D.	W.P.	B.P.	Coil Length	Coil Length
	mm	mm	bar	bar	m	ft
5002001	13	27	12	36	20,40	50,100
5002002	19	33	12	36	20,40	50,100
5002003	25	39	12	36	20,40	50,100
5002004	32	48	12	36	20,40	50,100
5002005	38	54	12	36	20,40	50,100

Remarks: Abrasion Loss acc DIN 53516 Max 60mm³, (Abrasion loss 50mm³ Available now)

Sand Blast Hose -4-Ply (ISO3861:2010)



Tube: Natural Rubber

Reinforcement: 4-Ply textile

Cover: Wrapped Surface (Black,Green,Red)

Operating Temperature: From -40°C to +70°C

Application:

- Conveys sand or shot for cleaning purposes
- Conveys sand from sandblast equipment to clean steel or concrete before painting or sealing

Code	I.D.	O.D.	W.P.	B.P.	Coil Length	Coil Length
	mm	mm	bar	bar	m	ft
5003001	19	38	12	36	20,40	50,100
5003002	25	48	12	36	20,40	50,100
5003003	32	54	12	36	20,40	50,100
5003004	38	60	12	36	20,40	50,100
5003005	51	73	12	36	20,40	50,100

Remarks: Abrasion Loss acc DIN 53516 Max 60mm³, (Abrasion loss 50mm³ Available now)

Concrete Pump Rubber Hose



Tube:

Black, smooth, SBR/NR rubber, abrasion resistant.

Reinforcement: Plies of steel wire cord.

Cover:

Black, smooth, (wrapped finish) anti-static SBR/NR rubber, abrasion resistant.

Operating Temperature: From -40°C to +70°C

Application:

Steel cord hose used for concrete placement at casting locations; it is used at the end of the pumps to distribute the concrete. The hose resists suction during the cleaning process. Usually supplied with swaged on "Full flow" hardened Couplings

Code	I.D.	O.D.	W.P.	B.P.	Max.Length
	mm	mm	bar	bar	m
5004001	51	75	85	200	10
5004002	65	89	85	200	10
5004003	76	100	85	200	10
5004004	100	124	85	200	10
5004005	125	153	85	200	10



MATERIAL HANDLING HOSE

Bulk Material Suction and Delivery Hose



Tube:

Black color of anti-static NR blend compound (high abrasion resistance)

Reinforcement:

Multiply layers of high tensile synthetic cord supported with helix wire with anti static wire.

Cover:

Black colour of no blend compound (Abrasion and weather resistance)

Operating Temperature: From -40°C to +80°C

Hose Type: Mandrel Built

Surface: Wrapped Surface **Tolerance:** ISO 1307

Code	I.D.	O.D.	W.P.	B.P.	Max.Length
	mm	mm	bar	bar	m
5005001	38	52	10	30	40
5005002	51	67	10	30	40
5005003	64	84	10	30	40
5005004	76	97	10	30	40
5005005	89	110	10	30	40
5005006	102	124	10	30	40
5005007	127	150	10	30	20
5005008	152	176	10	30	10

Plaster&Grout Spraying Hose



Tube:

Abrasion resistant anti-static natural rubber.

Reinforcement:

High tensile synthetic textile and anti-static copper wire.

Cover:

Abrasion, Ozone and Weather resistant Pin-Pricked Special Synthetic Rubber

Temperature: From -40°C to +70°C

Code	I.D.		O.D.	W.P.	B.P.	Length
	inch	mm	mm	bar	bar	m
5006001	3/4"	19	31	40	120	40-61
5006002	1"	25	37	40	120	40-61
5006003	1"	25	38	40	120	40-61
5006004	1-3/16"	30	44	40	120	40-61
5006005	1-1/4"	32	46	40	120	40-61
5006006	1-3/8"	35	49	40	120	40-61
5006007	1-1/2"	38	54	40	120	40-61
5006008	1-3/4"	45	61	40	120	40-61
5006009	2"	51	68	40	120	40-61
5006010	2-3/8"	60	80	40	120	40-61
5006011	2-1/2"	63.5	83.5	40	120	40-61
5006012	2-5/8"	65	85	40	120	40-61
5006013	2-3/4"	70	90	40	120	40-61
5006014	3"	76.2	96.2	40	120	40-61
5006015	4"	101.6	122	40	120	40-61
5006016	5"	127	155	40	120	40-61

Cement Discharge Hose



Tube:

Abrasion resistant anti-static natural rubber.

Reinforcement:

High tensile synthetic textile and anti-static copper wire.

Cover:

Abrasion, ozone and weather resistant pin-pricked special synthetic rubber

Temperature: From -40°C to +70°C

Code	I.D.		O.D.	W.P.	B.P.	Length
	inch	mm	mm	bar	bar	m
5007001	2"	51	65	10	30	40-61
5007002	2 1/2"	64	77	10	30	40-61
5007003	3"	76	90	10	30	40-61
5007004	3 1/2"	90	104	10	30	40-61
5007005	4"	102	118	10	30	40-61
5007006	5"	127	146	10	30	20
5007007	6"	152	172	10	30	20
5007008	8"	203	225	10	30	10
5007009	10"	254	276	10	30	10

Air Seeder Hose (Hardwall, Mandrel)



Tube: Smooth black ,synthetic rubber, abrasion resistant.

Reinforcement: High strength synthetic cord with helix wire.

Cover: Black smooth wrapped finish, weathering and ozone resistant.

Operating Temperature: From -30°C to +80°C

Application:

Hardwall hose designed for dry conveyance of seeds, and other materials for medium duty abrasion and services.

Available upon request:

- 1) Different diameters
- 2) Different hose cover color
- 3) Different working pressure
- 4) Corrugated cover.

code	I.D.		O.D.	W.P.		B.P.		Max.Length
	inch	mm	mm	bar	psi	bar	psi	m
5008001	3/4"	19	29	10	150	30	450	60
5008002	1"	25	36	10	150	30	450	60
5008003	1-1/4"	32	43.5	10	150	30	450	60
5008004	1-1/2"	38	49	10	150	30	450	60
5008005	2"	51	63	10	150	30	450	60
5008006	2-1/2"	64	78	10	150	30	450	60
5008007	3"	76	91	10	150	30	450	60
5008008	4"	102	120	10	150	30	450	60
5008009	5"	127	145.5	10	150	30	450	30
5008010	6"	152	174	10	150	30	450	30



WELDING HOSE

ALWAYS A RELIABLE PARTNER

Oxygen Hose-ISO3821:2019



Tube: Black, smooth, synthetic rubber

Reinforcement: High tensile synthetic yarn

Cover:

Blue or black, smooth synthetic rubber, abrasion, weather and abrasion resistant

Temperature range: From -35°C to +90°C

Application:

For conveying welding gases.

Standards: ISO3821:2019(Formerly EN559:2003)

Code	I.D.		O.D.	W.P.		B.P.		Weight	Max.Length
	mm	inch	mm	mpa	psi	mpa	psi	kg/m	m/roll
6001001	5	3/16"	12	2	300	6	900	0.13	100
6001002	6	1/4"	13	2	300	6	900	0.15	100
6001003	8	5/16"	15	2	300	6	900	0.23	100
6001004	9		16	2	300	6	900	0.25	100
6001005	10	3/8"	17	2	300	6	900	0.26	100
6001006	13	1/2"	22	2	300	6	900	0.36	100
6001007	16	5/8"	25	2	300	6	900	0.53	100

Acetylene Hose-ISO3821:2019



Tube: Black, smooth, synthetic rubber

Reinforcement: High tensile synthetic yarn braided

Cover:

Red color, smooth(streaky finish) synthetic rubber, abrasion, weather and abrasion resistant

Temperature range: From -35°C to +90°C

Application:

For conveying welding gases.

Standards: ISO3821:2019(Formerly EN559:2003)

Code	I.D.		O.D.	W.P.		B.P.		Weight	Max.Length
	mm	inch	mm	mpa	psi	mpa	psi	kg/m	m/roll
6002001	5	3/16"	12	2	100	6.3	300	0.13	100
6002002	6	1/4"	13	2	100	6.3	300	0.15	100
6002003	8	5/16"	15	2	100	6.3	300	0.23	100
6002004	9		16	2	100	6.3	300	0.25	100
6002005	10	3/8"	17	2	100	6.3	300	0.26	100
6002006	13	1/2"	22	2	100	6.3	300	0.36	100
6002007	16	5/8"	25	2	100	6.3	300	0.53	100



WELDING HOSE

Twin Line Welding Hose-ISO3821:2019



Tube: Black, smooth, synthetic rubber

Reinforcement: High tensile synthetic yarn braided

Cover:

Blue and red, green and red, smooth synthetic rubber, abrasion, weather and abrasion resistant

Temperature range: From -35°C to +90°C

Application:

For conveying welding gases.

Standards: ISO3821:2019(Formerly EN559:2003)

Code	I.D.		O.D.	W.P.		B.P.		Weight	Max.Length
	mm	inch	mm	mpa	psi	mpa	psi	kg/m	m/roll
6003001	5	3/16"	12	2	300	6	900	0.27	100±1%
6003002	6	1/4"	13	2	300	6	900	0.32	100±1%
6003003	8	5/16"	15	2	300	6	900	0.49	100±1%
6003004	10	3/8"	17	2	300	6	900	0.55	100±1%
6003005	13	1/2"	22	2	300	6	900	0.76	100±1%

Grade R Welding Hose



Inner layer of hose:

Styrene-butadiene rubber (SBR)

Intermediate reinforced layer:

Polyester fiber spiral line.

Protective layer of hose:

Blends of styrene-butadiene rubber and ethylene propylene diene monomer rubber(SBR & EPDM)

Applicable temperature: From -25°C to +70°C

Application:

Oxygen/acetylene gas welding;insert gas(such as argon gas and helium gas etc.) Welding is also compatible;in line with the requirements of standards rma/cga for grade r welding hose, non-conducting;neither the inner layer nor protective layer of rubber hose of this grade are oil and flame resistant.

Code	Mode(in)	Braided	Size (mm)			Pressure (bar)		Weight	Length	Volume
			I.D.	O.D.	Tolerance	W.P.	B.P.			
6004001	3/16"	1B	4.8	11.5	+/-0.3	20	60	0.14	100	0.025
6004002	1/4"	1B	6.4	13	+/-0.3	20	60	0.17	100	0.030
6004003	5/16"	1B	7.9	15	+/-0.4	20	60	0.21	100	0.030
6004004	3/8"	1B	9.5	17	+/-0.5	20	60	0.26	100	0.040
6004005	3/16&3/16"	1B	4.8	11.5	+/-0.3	20	60	0.28	100	0.040
6004006	1/4&1/4"	1B	6.4	13	+/-0.3	20	60	0.34	100	0.060
6004007	5/16&5/16"	1B	7.9	15	+/-0.4	20	60	0.42	100	0.070
6004008	3/8&3/8"	1B	9.5	17	+/-0.5	20	60	0.52	100	0.080

Grade RM Welding Hose



Inner layer of hose:

Styrene butadiene rubber (SBR) that is applied to oxygen and acetylene gas;

Intermediate reinforced layer:

Polyester fiber spiral line.

Protective layer of hose:

NBR rubber.

Applicable temperature: From -25°C to +70°C

Application:

Oxygen/acetylene gas welding or inert gas(such as argon gas and helium gas etc.)welding,in line with the requirements of standard RMA/CGA for Grade RM welding hose,non-conducting;the inner layer of rubber hose of this grade i not oil and flame resistant,but the protective layer is oil and flame resistant.

Code	Mode(in)	Braided	Size (mm)			Pressure (bar)		Weight kg/m	Length m	Volume cbm
			I.D.	O.D.	Tolerance	W.P.	B.P.			
6005001	3/16"	1B	4.8	11.5	+/-0.3	20	60	0.14	100	0.025
6005002	1/4"	1B	6.4	13	+/-0.3	20	60	0.17	100	0.030
6005003	5/16"	1B	7.9	15	+/-0.4	20	60	0.21	100	0.030
6005004	3/8"	1B	9.5	17	+/-0.5	20	60	0.26	100	0.040
6005005	3/16&3/16"	1B	4.8	11.5	+/-0.3	20	60	0.28	100	0.040
6005006	1/4&1/4"	1B	6.4	13	+/-0.3	20	60	0.34	100	0.060
6005007	5/16&5/16"	1B	7.9	15	+/-0.4	20	60	0.42	100	0.070
6005008	3/8&3/8"	1B	9.5	17	+/-0.5	20	60	0.52	100	0.080

Grade T Welding Hose



Inner layer of hose:

Chloroprene rubber(CR)

Intermediate reinforced layer:

Polyester fiber spiral line.

Protective layer of hose: NBR rubber.

Applicable temperature: From -20°C to +60°C

Application:

Applied to the circulation of such fuel gases as liquefied petroleum gas(LPG),MPS(propane and propadiene blends),natural gas(CNG) and methane(CH4);it can be also used to circulate the gases applied to the grade R welding hose;in line with the requirements of RMA/CGA for the Grade T welding hose;non-conducting;both the inner layer and protective layer of rubber hose of this grade are oil and flame resistant.

Code	Mode(in)	Braided	Size (mm)			Pressure(bar)		Weight kg/m	Length m	Volume cbm
			I.D.	O.D.	Tolerance	W.P.	B.P.			
6006001	3/16"	1B	4.8	11.5	+/-0.3	20	60	0.14	100	0.025
6006002	1/4"	1B	6.4	13	+/-0.3	20	60	0.17	100	0.030
6006003	5/16"	1B	7.9	15	+/-0.4	20	60	0.21	100	0.030
6006004	3/8"	1B	9.5	17	+/-0.5	20	60	0.26	100	0.040
6006005	3/16&3/16"	1B	4.8	11.5	+/-0.3	20	60	0.28	100	0.040
6006006	1/4&1/4"	1B	6.4	13	+/-0.3	20	60	0.34	100	0.060
6006007	5/16&5/16"	1B	7.9	15	+/-0.4	20	60	0.42	100	0.070
6006008	3/8&3/8"	1B	9.5	17	+/-0.5	20	60	0.52	100	0.080



LPG GAS HOSE

ALWAYS A RELIABLE PARTNER

Propane Hose(LPG Hose)-ISO3821:2010



Tube: Black NBR

Reinforcement: High tensile synthetic yarn braided

Cover:

Orange SBR/EPDM ,abrasion and weather resistant.

Temperature range: From -30°C to +80°C

Application:

For conveyance of liquid gas, home burner system, grill, oil-resistant

Standards: ISO3821:2019(Formerly EN559:2003)

Code	I.D.		O.D.	W.P.		B.P.		Weight	Max.Length
	mm	inch	mm	mpa	psi	mpa	psi	kg/m	m/roll
7001001	5	3/16"	12	2	300	6	900	0.13	100
7001002	6	1/4"	13	2	300	6	900	0.15	100
7001003	8	5/16"	15	2	300	6	900	0.23	100
7001004	9	23/64"	16	2	300	6	900	0.25	100
7001005	10	3/8"	17	2	300	6	900	0.26	100
7001006	13	1/2"	22	2	300	6	900	0.36	100

Propane/Butane-Orange -EN 16436-1



Tube: NBR, black, smooth.

Reinforcement: Textile spiral.

Cover: EPDM, orange, smooth.

Temperature range: From -30°C to +70°C

Safety factor: 3 : 1

Standard/approval: EN 16436-1:2014

Application:

A flexible hose for use with commercial propane and commercial butane and mixtures thereof in the vapour phase, for connection of appliances from pressurized gas container to a regulating device, pressurized gas container to an appliance, regulating device to an appliance and regulating device to installation pipework.

Attention:

It is vital to be aware of the working pressure. Fluted cover available on request. GPBD does not apply for welding purposes (see EN ISO 3821, EN1327), propulsion purposes and LPG transfer purposes (see EN1762).

Code	I.D.		Wall Width	O.D.	W.P.	Number of Inserts	Bending Radius (min.) in mm	Weight Approx. kg/m	Max.Length m/roll
	mm	inch	mm	mm	bar				
7002001	4.0		3.5	11.0	10	2	45	0.10	50
7002002	4.0		4.0	12.0	30	2	45	0.15	50
7002003	6.3	1/4"	3.5	13.3	10	2	68	0.13	50
7002004	6.3	1/4"	5.0	16.3	30	2	68	0.23	50
7002005	9.0		3.5	16.0	10	2	95	0.17	50
7002006	10		5.0	20.0	10	2	106	0.30	50



LPG GAS HOSE

Twin-OX-PB Welding/Gas Orange/Blue-ISO 3821 (EN 559)



Tube: Oxygen: EPDM, black, smooth. PB: SBR/NBR, black, smooth.

Reinforcement: Textile spiral.

Cover: Oxygen: EPDM, blue, smooth. PB: EPDM orange, smooth.

Temperature range: From -30°C to +70°C

Safety factor: 3 : 1 **Standard/approval:** ISO 3821:2019 (formerly EN 559:2003).

Application:

Blue hose – a flexible hose for transporting oxygen with air (oxygen content > 20%), for welding and cutting, for arc welding using shielding gas and related processes.

Orange hose – a flexible hose for transporting liquid gas (LPG) for welding and cutting. Also suitable for CNG and methylacetylene and propadiene mixes (MPS).

Code	I.D. (mm)		Wall Width (mm)		O.D.	W.P.	Number of Inserts	Bending Radius	Weight Approx.	Max.Length
	oxygen	pb	oxygen	pb	mm	bar		(min.) in mm	kg/m	m/roll
7003001	6.3	6.3	3.0	3.0	12.3	20	2	40	0.27	40
7003002	6.3	9.0	4.3	3.0	15	20	2	45	0.41	40
7003003	8.0	8.0	3.0	3.0	14	20	2	45	0.32	40

Delivery Hose For LPG EN 1762



Tube: Black,smooth NBR rubber compound. Conductive.

Reinforcement: High strength synthetic plies.

Cover:

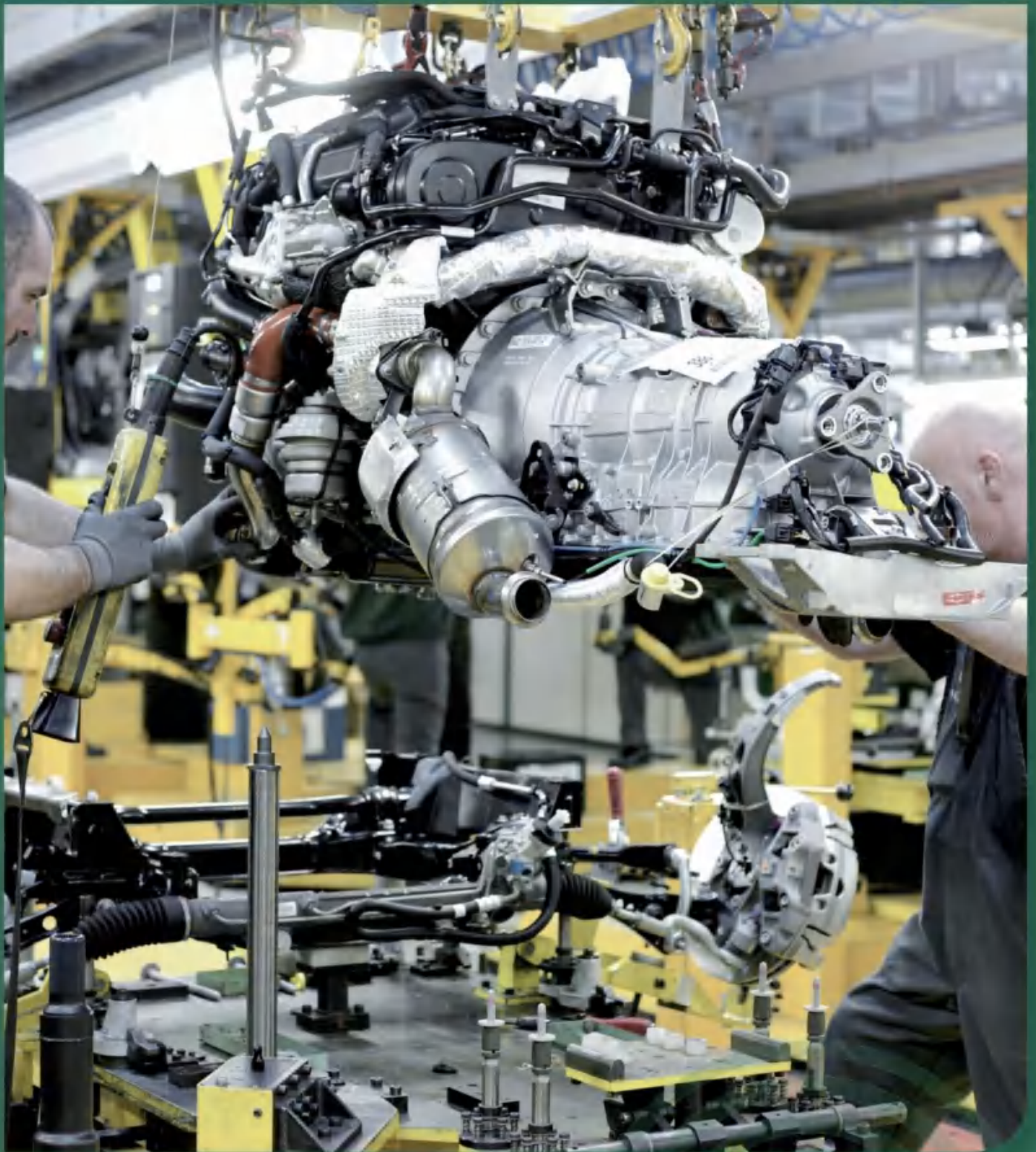
Black,smooth,pin pricked,fire proof and antistatic(R<106Ohm/m),cloth impression CR rubber compound,resistant to oils,abrasion and weathering.

Temperature range: From -30°C to +70°C

Application: Delivery hose for LPG.

Specifications: EN 1762

Code	Normal Diameter	Outside Diameter		Weight In Air Empty(Kg) Weight In Air Full Of Sea Water (Kg)			Minimum Bending Radius
	mm	body	end	9.1m(30ft)	10.7m(35ft)	12.2m(40ft)	
7004001	150(6")	430	485	852	963	1067	0.9
				1021	1162	1294	
7004002	200(8")	515	575	1114	1259	1396	1.2
				1410	1607	1793	
7004003	250(10")	600	675	1476	4667	1847	1.5
				1931	2201	2456	
7004004	300(12")	670	745	1822	8059	2281	1.8
				2490	2844	3176	
7004005	400(16")	825	850	2542	2877	3191	2.4
				3628	4154	4647	
7004006	500(20")	965	1000	3273	3712	4124	3
				4996	5738	6434	



AUTOMOTIVE HOSE

ALWAYS A RELIABLE PARTNER



AUTOMOTIVE HOSE

SAE J2064 R12 Air Condition Hose



Inner Tube: NBR/CSM

Reinforcement: Braided PET

Cover: EPDM

Working temperature: From -40°C to +135°C

Refrigerant applied: R12

Features:

Highly flexible all rubber construction, compatible with R12 refrigerants, low permeability, pulse resistant, aging resistant, ozone resistant, shock resistant, excellent resistance to heat and moisture ingress.

Code	I.D.		O.D.	W.P.	B.P.
	inch	mm	mm	mpa	mpa
8001001	5/16"	8±0.4	19±0.5	3.5	21
8001002	13/32"	10±0.4	23±0.5	3.5	21
8001003	1/2"	13±0.4	25.4±0.5	3.5	22

SAE J2064 Type C-Air Condition Hose



Tube: CSM/EPDM

Reinforcement: PVA

Cover: EPDM

Working temperature: From -40°C to +135°C

Refrigerant applied: R12, R134a

Buffer: EPDM/NBR

Barrier: Nylon alloy

Certificate: ISO/TS 16949:2009

Length: 50m or as requested

Application:

Air Conditioning Hose is widely used in the air conditioning system of vehicles, cars, and domestic air conditioning.

Features:

Pulse resistance, aging resistance, ozone resistance, shock resistance, and low permeability.

Air Condition Hose (A10)					
Specification	I.D.		O.D.	W.P.	B.P.
	inch	mm	mm	mpa	mpa
8002001	5/16"	8±0.4	15.2±0.5	3.5	23
8002002	7/16"	11.5±0.4	18.4±0.5	3.5	22
8002003	1/2"	13±0.4	21±0.5	3.5	20
8002004	5/8"	15.5±0.4	23±0.5	3.5	21

R134a Air Condition Hose (A20)					
Specification	I.D.		O.D.	W.P.	B.P.
	inch	mm	mm	mpa	mpa
8002005	5/16"	8±0.4	19±0.5	3.5	21
8002006	13/32"	10±0.4	23±0.5	3.5	21
8002007	1/2"	13±0.4	25.4±0.5	3.5	22
8002008	5/8"	16±0.4	28.6±0.5	3.5	18

SAE J2064 Type E-Air Condition Hose



Barrier: Nylon alloy

Buffer: EPDM/NBR

Reinforcement: PVA

Cover: EPDM

Refrigerant applied: R12, R134a, R404a

Certificate: ISO/TS 16949:2009

Working temperature: From -40°C to +135°C

Features:

Pulse resistance, aging resistance, ozone resistance, shock resistance, and low permeability.

Application:

Air Conditioning Hose is widely used in the air conditioning system of vehicles, cars, and domestic air conditioning.

Code	I.D.		O.D.	W.P.	B.P.
	mm	inch	mm	mpa	mpa
8003001	8.2	5/16"	18.7±0.5	3.5	20
8003002	10.5	13/32"	22.5±0.5	3.5	23
8003003	13	1/2"	23±0.5	3.5	22
8003004	16	5/8"	28±0.5	3.5	21
8003005	8.2	5/16"	15.2±0.5	3.5	23
8003006	10	13/32"	17.2±0.5	3.5	22
8003007	10.5	13/32"	18.7±0.5	3.5	22
8003008	11.5	7/16"	18.5±0.5	3.5	23
8003009	13	1/2"	20.6±0.5	3.5	22
8003010	13.2	1/2"	20.8±0.5	3.5	22
8003011	15.2	5/8"	22.8±0.5	3.5	20
8003012	15.5	5/8"	23.5±0.5	3.5	20
8003013	19	3/4"	28.5±0.6	3.5	18

Refrigerant Charging Hose



Material: EPDM, CR for option

Reinforcement: 1 or 2 layer of fiber braid

Surface: Smooth

Color: Black, gray, yellow, red, blue, white.

Standard: R12, R22, R502, R134A

Work temperature: From -30°C to +110°C

Application:

For the transportation of r12, r22, r502, r134a medium, etc. Widely use in vehicle air conditioning air-condition industry freezing device.

Code	I.D.	O.D.	W.P.	B.P.	Length	Measurement	Weight
	mm	mm	psi	psi	m	cbm/roll	kg/m
8004001	5	11	500	2500	100	0.02	0.13
8004002	5	11	600	3000	100	0.02	0.13
8004003	5	12	800	4000	100	0.02	0.16



AUTOMOTIVE HOSE

SAE J20 R3 EPDM Car Heater and Coolant Hose



Material: EPDM,CR,NBR

Reinforcement: High tensile synthetic yarn (Polyester)

Cover: Black smooth EPDM, with good heat, ozone and weather resistance

Work temperature: From -30°C to +110°C

Application:

For conveyance of hot water predominantly in vehicles. It's also ideal for hot water transfer in mechanical equipment and industrial use

Code	I.D.	O.D.	W.P.	B.P.	Length
	mm	mm	Bar	Bar	m
40093047	10	17	10	30	100
40093048	13	21	10	30	100
40093049	16	24	10	30	100
40093050	19	27	10	30	100
40093051	25	34	10	30	100

SAE J1401 Hydraulic Brake Hose



Material:

EPDM with synthetic rubber, extruded whole without joints, of uniform thickness

Reinforcement:

High tensile PE/PVA for the first, high tensile PVA for the second Layer;

Work temperature: From -40°C to +120°C

Application:

Hydraulic brake hose acts as a pressure transmission for automotive hydraulic brake system. Used for cars, motorcycles, light trucks and other light heavy-duty vehicles for hydraulic brake system.

Code	I.D.	O.D.	W.P.	B.P.	Length
	mm	mm	Bar	Bar	m
8005001	3.2	10.5	276	490	50
8005002	4.8	12.5	276	345	50

SAE J1402 Air Brake Hose



Material:

Black, seamless synthetic rubber compound

Reinforcement:

High strength synthetic fabrics.

Surface:

Black, seamless, synthetic rubber compound abrasion, ageing, ozone, and weather-resistant.

Work temperature: From -40°C to +100°C

Application:

Used as flexible joint in automotive air brake systems. Suitable for compressed air with oil traces.

Code	I.D.	O.D.	W.P.		B.P.	Length
	mm	mm	Bar		Bar	m
40093044	9.5	19	20		60	80
40093045	12.5	22.5	20		60	60
40093046	14.5	24.5	20		60	50

Power Steering Hose SAE J188



Tube: Oil resistance synthetic rubber (CSM).

Reinforcement:

High tensile fiber wire braided.

Cover: Synthetic rubber with excellent aging resistance and weather ability(CPE/CSM).

Surface treatment: Smooth surface and cloth wrapped.

Work temperature: From -40°C to +121°C

Characteristic:

- Reduce noise
- Decrease vibration
- Resistance to high pressure, impulse & ozone

Application:

Apply in power steering system inlet line of various car, multi-function business car, light truck etc.

code	I.D.		O.D.	W.P.		B.P.		Max.Length
	inch	mm	mm	bar	psi	bar	psi	m
400940472	3/8"	9.8	19.8	103	1545	414	6210	61



SPRAY PAINTING HOSE

ALWAYS A RELIABLE PARTNER

Airless Spray Painting Hose-Exceeds SAE 100R7



Inner Tube: Polyamide

Reinforcement: Two layers of braided high resistance synthetic fiber

Cover: Pin pricked anti-abrasion polyurethane **Fittings:** BSP or NPS

Temperature Range:

For solvents, paints, hydraulic fluids -40°C to +93°C

Application:

Airless paint spray systems for 228 to 360 bar. Suitable for applications requiring chemical resistance to solvents and aggressive fluids. Specially suitable for pulsating electric piston pumps

Code	I.D.		O.D.	W.P.		B.P.	
	inch	mm	mm	bar	psi	bar	psi
9001001	1/8"	3.2	8.1	210	3045	840	12180
9001002	3/16"	5	10	210	3045	840	12180
9001003	1/4"	6.3	12.2	210	3045	840	12180
9001004	5/16"	8	14.2	175	2538	700	10150
9001005	3/8"	10	16	160	2320	640	9280
9001006	1/2"	13	19.5	140	2030	630	9135
9001007	5/8"	16.4	23	130	1885	520	7540
9001008	3/4"	19.5	26.4	105	1522	420	6090
9001009	1"	25.4	33.5	77	1116	310	4495

Blue Airless Spray Painting Hose



Inner Tube: Polyamide **Reinforcement:** Single braid of steel wire

Cover: Polyurethane, blue colour, pin-pricking (optional)

Fittings: BSP or NPS

Temperature Range:

For solvents, paints, hydraulic fluids -40°C to +93°C

Application:

Airless paint spray systems for 100 to 350 bar. Suitable for applications requiring chemical resistance to solvents and aggressive fluids. Due to low permeation value of polyamide, the hose is also suitable for industrial gases

Code	I.D.		O.D.	W.P.		B.P.	
	inch	mm	mm	bar	psi	bar	psi
9002001	3/16"	5	10	330	4785	1320	19140
9002002	1/4"	6.3	11.7	300	4351	1200	17404
9002003	5/16"	8	13.5	215	3117	860	12470
9002004	3/8"	10	15.5	215	3117	860	12470
9002005	1/2"	13	19	180	2610	720	10440
9002006	5/8"	16.4	22.5	145	2102	580	8510
9002007	3/4"	19.5	26.5	120	1740	480	6960
9002008	1"	25.4	33.2	97	1406	390	5655



SPRAY PAINTING HOSE

Black Airless Spray Painting Hose



Inner Tube: Polyamide

Reinforcement: Double braids of steel wire

Cover: Polyurethane, black colour, pin-pricking (optional)

Fittings: BSP or NPS

Temperature Range:

Continuous -40°C to +100°C Temp. Not to exceed +70°C for Air and Water based fluids

Application:

High pressure airless paint spray systems for 150 to 450 bar. Suitable for applications requiring chemical resistance to solvents and aggressive fluids. Due to low permeation value of polyamide, the hose is also suitable for industrial gases

Code	I.D.		O.D.	W.P.		B.P.	
	inch	mm	mm	bar	psi	bar	psi
9003001	1/4"	6.3	13.2	450	6525	1800	25920
9003002	5/16"	8	15.2	400	5800	1600	23200
9003003	3/8"	10	17.5	380	5510	1520	22040
9003004	1/2"	13	21.5	300	4350	1200	17400
9003005	5/8"	16.4	24.5	180	2610	720	10440
9003006	3/4"	19.5	28	160	2320	640	9280
9003007	1"	25.4	35	120	1740	640	6960

Gray Airless Spray Painting Hose



Inner Tube: Polyamide

Reinforcement: One layer of braided synthetic fiber and one layer of braided steel wire

Cover: Polyurethane, gray colour, pin-pricking (optional)

Fittings: BSP or NPS

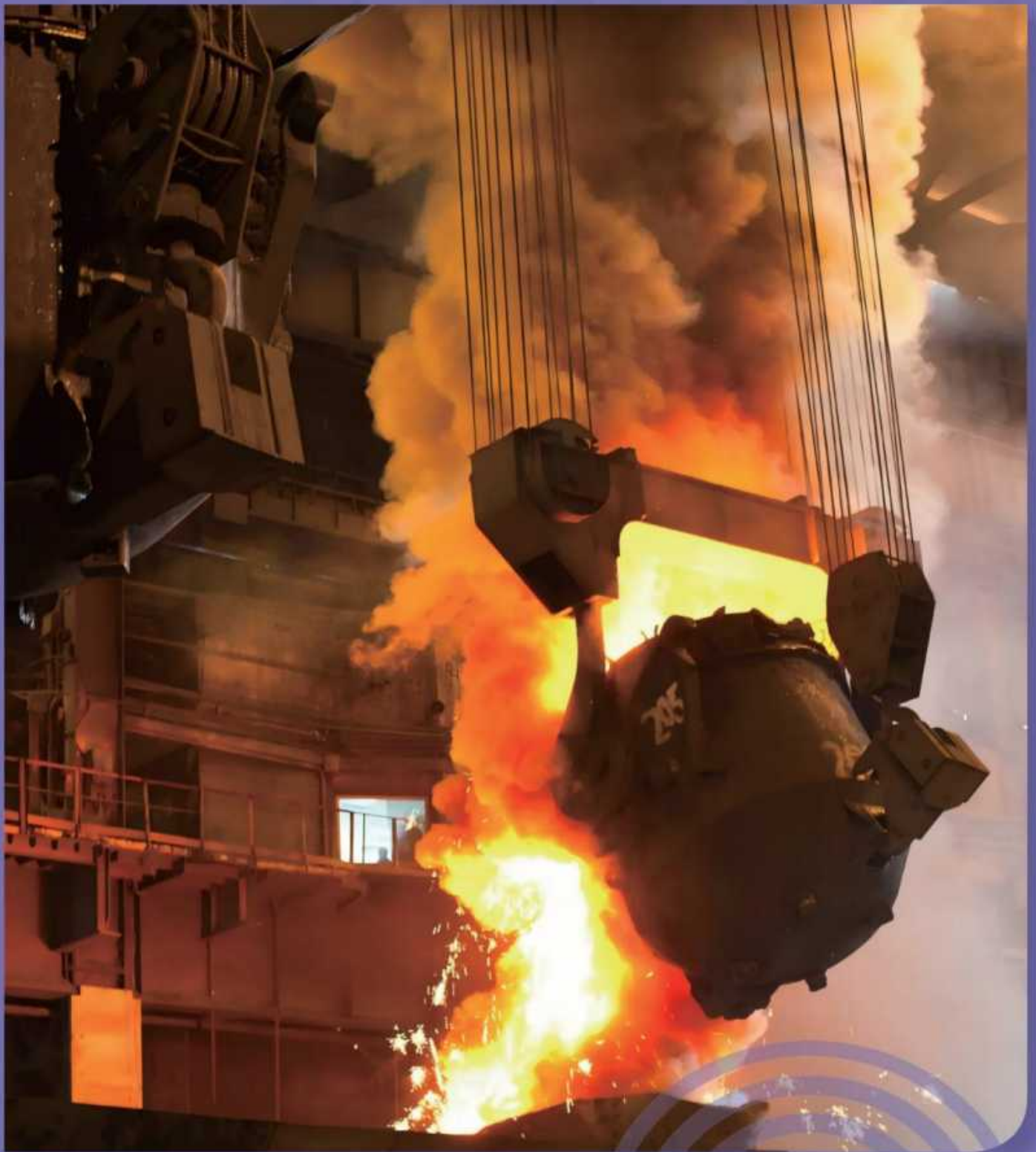
Temperature Range:

Continuous: -40°C to +100°C Temp. Not to exceed +70°C for Air and Water based fluids

Application:

High pressure airless paint spray systems for 240 to 550 bar. Suitable for applications requiring chemical resistance to solvents and aggressive fluids. Due to low permeation value of polyamide, the hose is also suitable for industrial gases

Code	I.D.		O.D.	W.P.		B.P.	
	inch	mm	mm	bar	psi	bar	psi
9004001	1/4"	6.3	12.2	500	7250	1250	18125
9004002	5/16"	8	14.2	500	7250	1250	18125
9004003	3/8"	10	16	500	7250	1250	18125



SPECIAL HOSE

ALWAYS A RELIABLE PARTNER



SPECIAL HOSE

Carbon Free Hose



Inner Tube: White carbon free synthetic rubber compound

Reinforcement: Single braid high -tenacity textile yarn

Cover:

Carbon free with green colour rubber compound with abrasion, aging and weather resistance.

Temperature Range:

Service temperature From -40°C to +80°C

Application:

Carbon rubber hose is used for carrying power cables in glass works, electrical furnaces, servicing in iron & steel industries for protection from exposure to high temperature, current leakage, radiation from steel furnace, open flame and splashes of hot metal.

Code	I.D.			O.D.	W.P.		B.P.		Minimum Bend Radius
	inch	mm	dash		psi	bar	psi	bar	
1100000	3/8"	9.5	-6	17	250	17	1000	68	—
1100001	1/2"	12.7	-8	21.8	250	17.24	1000	68	100
1100002	5/8"	16	-10	26	250	17	1000	68	125
1100003	3/4"	19.05	-12	31	250	17.24	1000	68	150
1100004	1"	25.4	-16	37.5	250	17.24	1000	68	177
1100005	1 1/4"	31.75	-20	45.2	250	17.24	1000	68	225
1100006	1 1/2"	38.1	-24	53.6	250	17.24	1000	68	300
1100007	2"	50.8	-32	65.5	200	14	800	56	400

NR Rubber Tubing for Abrasive Materials-No pressure



Tube: Brown, smooth, NR rubber compound,SHORE A 45

Cover: Black, smooth fabric impression, NR rubber compound,SHORE A 45

Characteristic:

- High abrasion resistant tube
- Weather and ozone resistant
- Layflat and light weight

Application:

No pressure discharge hose,for silos and hopper,for abrasive material as sand,gravel,cement etc.

Code	I.D.		O.D.	Length
	mm	inch		
1100101	80	3-5/32"	90	5/20
1100102	90	3-17/32"	100	5/20
1100103	102	4"	112	5/20
1100104	110	4-5/16"	120	5/20
1100105	120	4-23/32"	130	5/20
1100106	127	5"	137	5/20
1100107	130	5-1/8"	140	5/20
1100108	140	5-33/64"	150	5/20
1100109	152	6"	160	5/20
1100110	160	6-19/64"	170	5/20
1100111	168	6-39/64"	178	5/20

Code	I.D.		O.D.	Length
	mm	inch		
1100112	180	7-3/32"	197	5/20
1100113	190	7-31/64"	200	5/20
1100114	203	8"	213	5/20
1100115	220	8-21/32"	230	5/20
1100116	254	10"	264	5/20
1100117	273	10-3/4"	283	5/20
1100118	280	11-1/32"	190	5/20
1100119	305	12"	315	5/20
1100120	273	12-19/32"	283	5/20
1100121	350	13-25/32"	360	5/20
1100122	400	15-3/4"	410	5/20



SILICONE HOSE

ALWAYS A RELIABLE PARTNER



SILICONE HOSE

76mm Straight Coupler



Inner Tube: 100% High quality silicone

Reinforcement: Polyester/Aramid/Glass fiber

Cover: Black/Red/Blue/Green/Yellow smooth or cloth silicone.

Temperature Range: Service temperature -40°C to +220°C

Application:

Joining your intake pipe to the throttle body assembly, air metering assembly, intercooler, BOV pipe, or turbo inlet/outlet. Custom compressor, intercooler or inlet piping for turbo/supercharged car. Custom cold air intake for nonturbo car, Custom cold air intake for nonturbo car.

These silicone parts can be used in trucks, recreational vehicles, boats, or anything else with an engine.

Code	I.D.	Layer	Thickness	Length
	mm		mm	
1200000	63	4	5	76
1200001	65	4	5	76
1200002	68	4	5	76
1200003	70	4	5	76
1200004	76	4	5	76
1200005	80	4	5	76
1200006	83	4	5	76
1200007	89	4	5	76
1200008	102	4	5	76

Silicone Heater Hose



Inner Tube: 100% High quality silicone

Reinforcement: Polyester Reinforced

Cover: Blue/Red/Black/Clear silicone

Temperature Range: From -40°C to + 220°C

Application: Turbine supercharger, coolant or radiator

Code	I.D.	Layer	Thickness	Length
	mm		mm	
1200100	8	2	4/5	50
1200101	10	2	4/5	50
1200102	12	2	4/5	50
1200103	13	2	4/5	50
1200104	14	2	4/5	50
1200105	16	2	4/5	50
1200106	18	2	4/5	50
1200107	20	2	4/5	50
1200108	22	2	4/5	50
1200109	24	2	4/5	50
1200110	25	2	4/5	50
1200111	28	2	4/5	50
1200112	30	2	4/5	50
1200113	32	2	4/5	50

Silicone Meter Hose



Inner Tube: 100% High quality silicone

Reinforcement: Polyester/Aramid/Glass fiber

Cover: Black/Red/Blue/Green/Yellow smooth or cloth silicone

Temperature Range: From -40°C to + 220°C

Application:

- Heating and Cooling Systems
- CAC Charge-Air-Cooler (Hot & Cold side)
- Turbo Charger Systems & Custom Compressor, Intercooler or Intake & Inlet Piping for turbo/ Superchargers. etc.

Code	I.D. mm	Layer	Thickness mm	Length mm
1200200	6.5	4	4	1000
1200201	8	4	4	1000
1200202	9	4	4	1000
1200203	10	4	4	1000
1200204	12	4	4	1000
1200205	14	4	4	1000
1200206	16	4	4	1000
1200207	18	4	4	1000
1200208	20	4	4	1000
1200209	24	4	4	1000
1200210	26	4	4	1000
1200211	30	4	4	1000
1200212	32	4	4	1000
1200213	34	4	4	1000
1200214	36	4	4	1000
1200215	38	4	4	1000
1200216	40	4	4	1000
1200217	42	4	5	1000
1200218	45	4	5	1000
1200219	48	4	5	1000
1200220	51	4	5	1000
1200221	57	4	5	1000
1200222	60	4	5	1000
1200223	63	4	5	1000
1200224	70	4	5	1000
1200225	76	4	5	1000
1200226	80	4	5	1000
1200227	89	4	5	1000
1200228	102	4	5	1000

Silicone Braided Hose



Material: Silicone. **Reinforcement:** High temperature polyester braids.

Temperature Range: From -80°C to +250°C

Application:

- Coolant Hose for Industrial Machinery & Equipments.
- Chemical & Adhesive filling systems.
- Pipes & connecting hose for Food & Beverages processing.
- Medical Equipments.
- Transfer of chemicals, foods, beverages and pharmaceutical products

Code	I.D. mm	O.D. mm	Wall Thickness mm	Length m
1200300	6	13	3.5	100
1200301	8	15	3.5	100
1200302	10	17	3.5	100
1200303	13	21	4.0	100
1200304	16	24	4.0	100
1200305	19	27	4.0	100
1200306	25	35	5.0	100
1200307	32	42	5.0	100



SILICONE HOSE

Steel Wire Silicone Hose



Material: Food grade silicone. **Reinforcement:** Food grade 304 stainless steel

Temperature Range: From -40°C to + 220°C

Application:

Suitable for bulk transfer, high pressure, vacuum process, pharmaceutical, biomedical, load cell , pump, vessel or tank transfer , laboratory, cosmetics, food processing and liquid transportation (such as: white wine, medical liquid, milk, water etc).

Code	I.D	Wall thickness	W.P.	B.P.	B.R.
	mm	mm	bar	bar	mm
1200400	10	5.5	11	33	34
1200401	13	6.5	9.9	30	39
1200402	16	7.5	9.1	27	45
1200403	19	8.5	8.3	25	54
1200404	25	9.5	7.4	22	68
1200405	32	10.5	6.4	20	94
1200406	38	11.5	5.7	17	112
1200407	51	12.5	4.6	14	144
1200408	57	13.5	4.3	13	165
1200409	63	14.5	3.8	11	181
1200410	76	15.5	3	9	232
1200411	89	16.5	2.7	8	258
1200412	102	17.5	1.9	5	367

Vacuum Silicone Hose



Material: Silicone.

Temperature Range: From -40°C to +220°C **Color:** Any colors and sizes are available

Application:

Silicone hose can be widely used in aviation, electronics, petroleum, chemical, mechanical, electrical, medical, oven, food and other industrial sectors of good electrical insulation sealing liquid transport materials. Precision representatives, oil pipelines, household electrical appliances, sealing, drinking water pipeline seals, medicine, etc.

Code	I.D.	O.D.	Wall Thickness	Length
	mm	mm	mm	m
1200500	3	5	1	100
1200501	4	8	2	100
1200502	5	10	2.5	100
1200503	6	8	1	100
1200504	8	12	2	100
1200505	9	12	1.5	100
1200506	10	16	2	100
1200507	12	18	2	50
1200508	19	23	2	50
1200509	25	32	3.5	50



Please Note:

Before using our products with new or untested media, or for applications that are not clearly indicated in the product information, written advice must be obtained from a specialist dealer or a professional application engineer. For safety reasons, all products must be inspected regularly for operational safety and replaced in the event of any damage (especially of the cover) or unusual signs of wear and tear. All products must be stored, handled and maintained in accordance with all our respective instructions and DIN 7716:1982. The information in our catalogue as well as each individual data sheet is subject to change at any time without notice since we are constantly developing and improving our products and due to constant technical developments after the latest release date of the catalogue and/or individual data sheets. In order to always have the latest product and safety information make sure you visit our website (www.somaxflex.com) regularly or contact one of our specialist dealers. All contracts with Somax are exclusively subject to our general terms and conditions (available at www.somaxflex.com).

ATTENTIONS IN USING HOSES

Due to complicated species, various structures and different usage terms of hoses, how long the hoses can be used is dependent not only on their quality but also on the correct use and maintain. Thereby, even if the products have high quality, if you do not use them and maintain it correctly the products will not be used longer and will cause serious accident so as to make great loss to property. Now, we'd like to give you some suggestions in using.

1. Rubber hoses must be in strict use according to different species and specifications. Incorrect use and substitution are prohibited.
2. Rubber hoses are not allowed to be excessively curved in order to avoid distort at some parts.
3. In order to avoid inner steel wire moving of suction hose, the diameter of the bending radius can not be less than 20 times of the rubber hose inner diameter.
4. Hoses must be strictly used in specified working pressure range.
5. When in using, hoses especially hoses with the metal frame are not allowed to be stacked by heavy items and other unnecessary machinery.
6. Try to avoid direct sunlight and not to be close to heat equipment when using.
7. Inner hoses (especially acid-transportation hose, fog-jetting hose and ash slurry hose etc.) must be cleaned neatly when in use.
8. Choosing the suitable metal tie-in and specification, assembling reasonably, especially high pressure rubber hoses, so as not to damage themselves.
9. When in using high pressure rubber hoses, the radius of the curve should not be less than that listed in the specified range. The excessive curve of hoses will affect anti-squeeze effect, so as to cause tiredness ahead of schedule.
10. In order to extend its period of use, regular inspection should be made according to relevant request when using anti-squeeze rubber hoses, anti-chemical medicine and organic impregnate rubber hoses.

ATTENTIONS IN TRANSPORTATION AND STORAGE

During transportation, hoses must be stored in circles or adjust flatly and tidily in the truck. In order to avoid the wear and tear of hoses, they are not allowed to be stacked by other products.

Truck used for transportation of hoses must be put in acid, alkali, oil and organic impregnation etc.

In order not to destroy the hoses with metal helix during transportation, they need to be put lightly and carefully.

When hoses are stored in the open air, platform and dock, they must be putted tidily and flatly on flat ground, then covered by oil cloth.

Hoses should be stored in a place which can avoid sunlight, rain and snow, the place should be kept in cleaning condition. Hoses should be avoided meeting with acid, alkali, oil and organic impregnation, they also need to be put one meter away from heat equipment.

Storage temperature of the storeroom should be kept between -15°C to $+40^{\circ}\text{C}$, the relative humidity should between 50%-80%.

During storage, hoses should be put flatly. Height of piles of hoses placed in coil should not be more than 1.5 meters. Height of piles of hoses placed flatly should not be more than 1 meter. Hoses should be overturned each quarter during storage.



SOMAXFLEX
ALWAYS A RELIABLE PARTNER

IMPORTANT NOTICE:

Our catalogue and any individual data sheet have been prepared with great care in order to provide you with all the information you need. The information contained therein is based on the state-of-the-art industrial technology and many years of experience and testing; whenever indicated for a certain product, we also confirm conformity with the resistance requirements of the media indicated in the product catalogue. However, the individual conditions of storage, maintenance and use decisively affect the safe and durable use of each product. The quality and safety of our products as indicated in the catalogue or individual data sheets are therefore strictly subject to the continuous observance of all specifications and restrictions in our written product information, applicable laws and standards. We reject any liability for safety issues or other consequences due to improper product choice, maintenance or handling (e.g. squashing, rupturing, stretching or filling with non-approved media). Our products must not be used in airplanes or other aerial vehicles under any circumstances.

SYMBOLS

I.D.: INNER DIAMETER

B.R. : BENDING RADIUS

O.D.: OUTER DIAMETER

W: THEORETICAL WEIGHT

W.P.: WORKING PRESSURE

B.P.:BURST PRESSURE

L.:LENGTH

TOLERANCES

Weight : (±5%All dimensions)

For material handling hoses

Burst Pressure: 10% deviation

Abrasion Loss Value: ±10mm³deviation

OTHER COLORS AND DIAMETERS AVAILABLE UPON REQUEST

For further details please contact our department. Our company reserves the right of changing hose construction specifications due to technology obligations and developments

IMPORTANT INFORMATION:

Incorrect product selection or improper installation of hoses can result in damage to or failure of the hose, (often serious) material damage, and personal injury. Particularly in applications with high operational pressures, non-compliance with specifications can result in a serious risk of injury! Therefore, in case of doubt, please seek specific advice!

QINGDAO SOMAX MANUFACTURING CO.,LTD.

Add: No.177 Tailiu Road,Qingdao City,Shandong Province,China 266001

Tel: 0086 13256393632

JINYUAN RUBBER MANUFACTURING LTD.

Add: No.177 Tailiu Road,Qingdao City,Shandong Province,China 266001

Tel: 0086 13256393632

Email: sales@somaxflex.com

WhatsApp: +86 132 5639 3632

Wechat: +86 159 5321 2913

www.somaxflex.com